

NOTES:

1. SUBSTRATE:  
FUSED SILICA

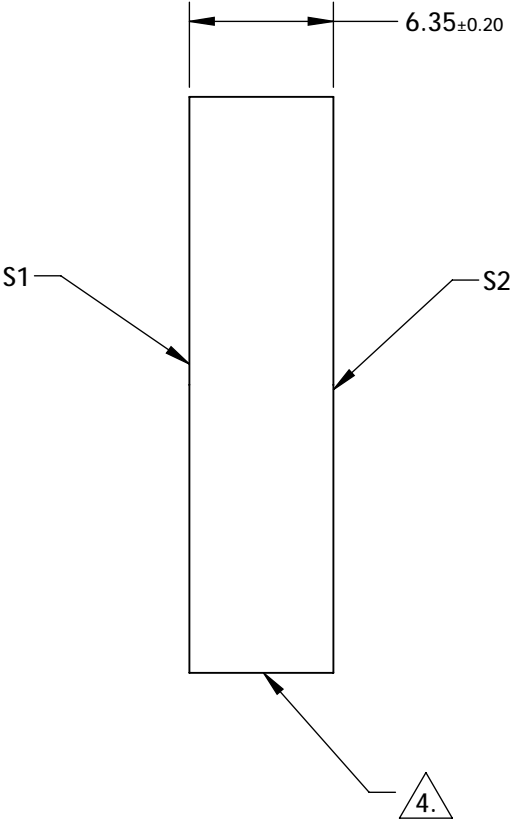
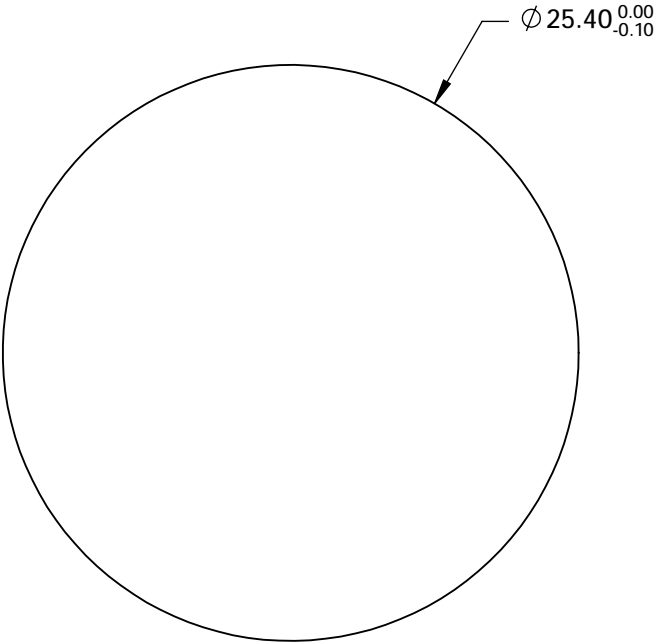
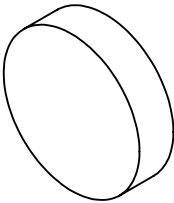
2. SURFACE S2 TO BE PARALLEL TO SURFACE S1 <10 ARCSEC

3. COATING (APPLY ACROSS CLEAR APERTURE)

S1: Ravg >99.9% 400-750nm for S-Pol, Ravg >99.8% 410-750nm for P-Pol @ 45 degrees  
S2: NONE

4. FINE GRIND SURFACE

5. ROHS COMPLIANT



**FOR INFORMATION ONLY:  
DO NOT MANUFACTURE  
PARTS TO THIS DRAWING**

SPECIFICATIONS SUBJECT TO CHANGE WITHOUT NOTICE  
DIMENSIONS ARE FOR REFERENCE ONLY

	S1	S2
SHAPE	PLANO	PLANO
SURFACE FLATNESS	$\lambda/10$	N/A
SURFACE QUALITY	10-5	COMMERCIAL POLISH
CLEAR APERTURE	$\phi 24.13$	N/A
BEVEL	PROTECTED AS NEEDED	PROTECTED AS NEEDED



ALL DIMS IN mm

**Edmund Optics®**

TITLE

25.4mm Dia UHR Broadband Dielectric Mirror,  
400-750nm

DWG NO

17501

SHEET  
4 OF 4