

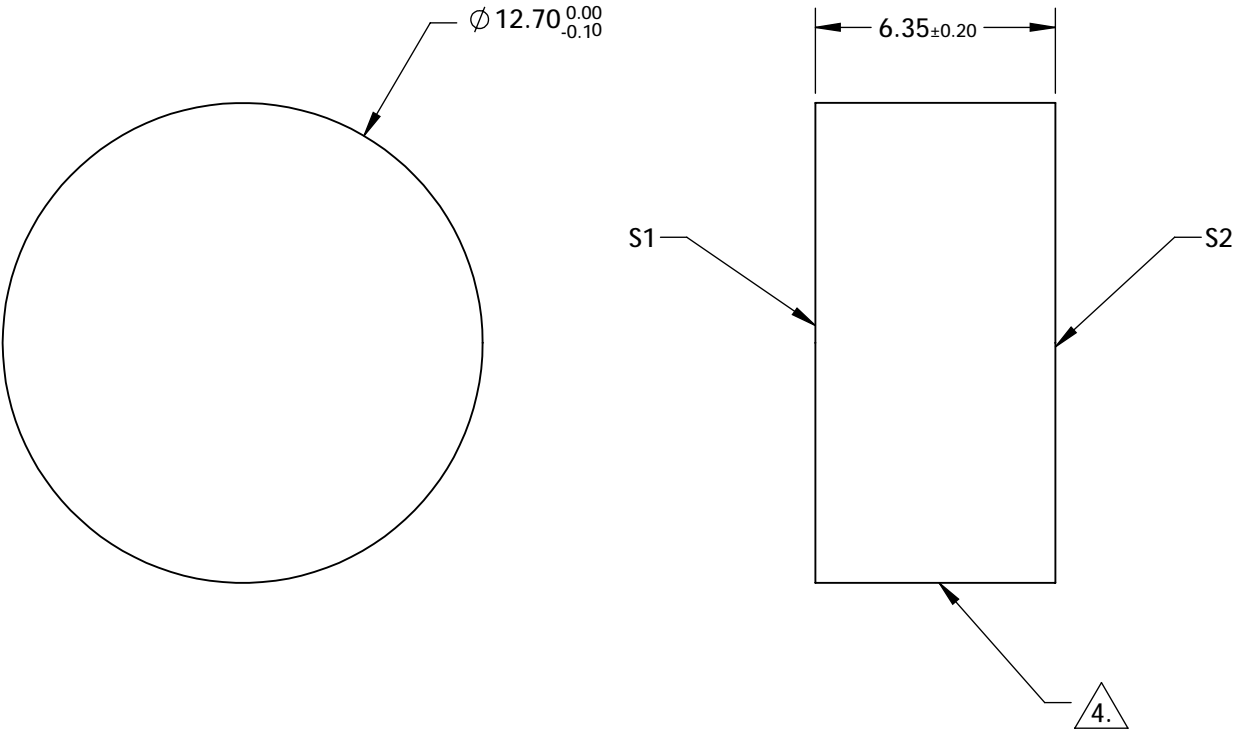
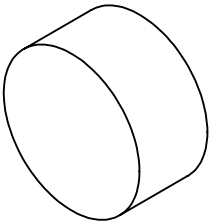
NOTES:

- 1. SUBSTRATE:  
FUSED SILICA
- 2. SURFACE S2 TO BE PARALLEL TO SURFACE S1 <10 ARCSEC
- 3. COATING (APPLY ACROSS CLEAR APERTURE)

S1: Ravg >99.9% 400-750nm for S-Pol, Ravg >99.8% 410-750nm for P-Pol @ 45 degrees  
S2: NONE

4. FINE GRIND SURFACE

- 5. ROHS COMPLIANT



**FOR INFORMATION ONLY:  
DO NOT MANUFACTURE  
PARTS TO THIS DRAWING**

SPECIFICATIONS SUBJECT TO CHANGE WITHOUT NOTICE  
DIMENSIONS ARE FOR REFERENCE ONLY

	S1	S2
SHAPE	PLANO	PLANO
SURFACE FLATNESS	$\lambda/10$	N/A
SURFACE QUALITY	10-5	COMMERCIAL POLISH
CLEAR APERTURE	$\varnothing 11.7$	N/A
BEVEL	PROTECTED AS NEEDED	PROTECTED AS NEEDED



ALL DIMS IN mm

**EO**® Edmund Optics®

TITLE

12.7mm Dia UHR Broadband Dielectric Mirror,  
400-750nm

DWG NO

17500

SHEET  
3 OF 4