

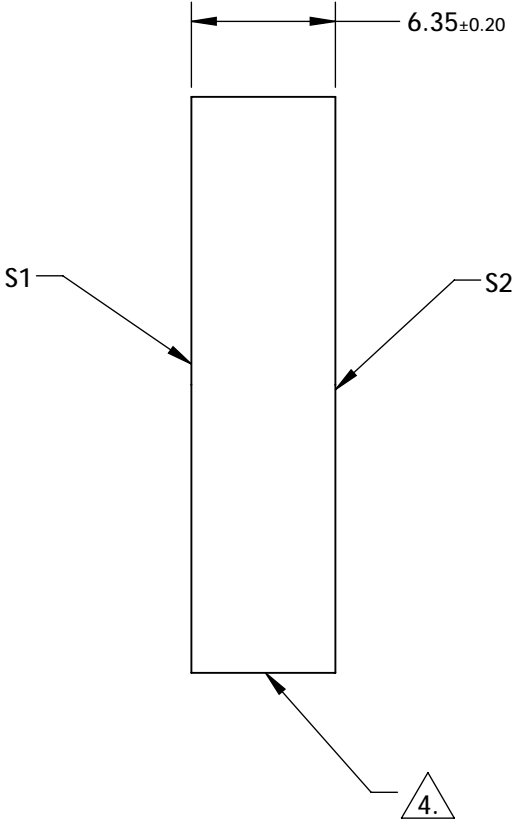
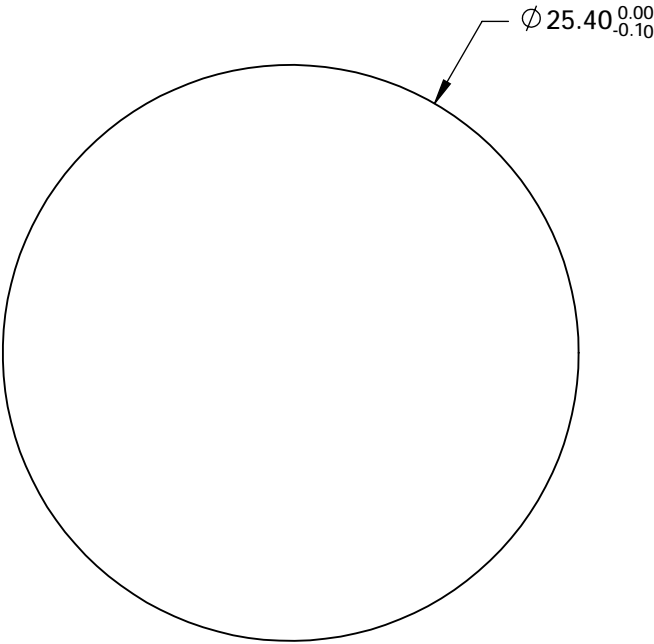
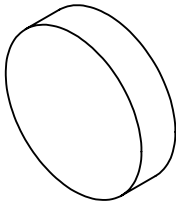
NOTES:

- 1. SUBSTRATE:
FUSED SILICA
- 2. SURFACE S2 TO BE PARALLEL TO SURFACE S1 <10 ARCSEC
- 3. COATING (APPLY ACROSS CLEAR APERTURE)

S1: Rabs >99.9% 750-1100nm for S and P @ 45 degrees
S2: NONE

4. FINE GRIND SURFACE

5. ROHS COMPLIANT



**FOR INFORMATION ONLY:
DO NOT MANUFACTURE
PARTS TO THIS DRAWING**

SPECIFICATIONS SUBJECT TO CHANGE WITHOUT NOTICE
DIMENSIONS ARE FOR REFERENCE ONLY

	S1	S2
SHAPE	PLANO	PLANO
SURFACE FLATNESS	$\lambda/10$	N/A
SURFACE QUALITY	10-5	COMMERCIAL POLISH
CLEAR APERTURE	$\phi 24.13$	N/A
BEVEL	PROTECTED AS NEEDED	PROTECTED AS NEEDED



ALL DIMS IN

mm



Edmund Optics®

TITLE

25.4mm Dia UHR Broadband Dielectric Mirror,
750-1100nm

DWG NO

17498

SHEET
2 OF 4