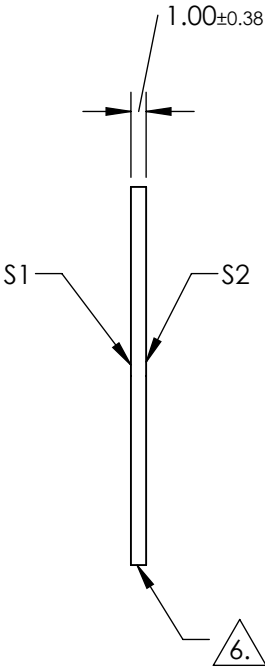
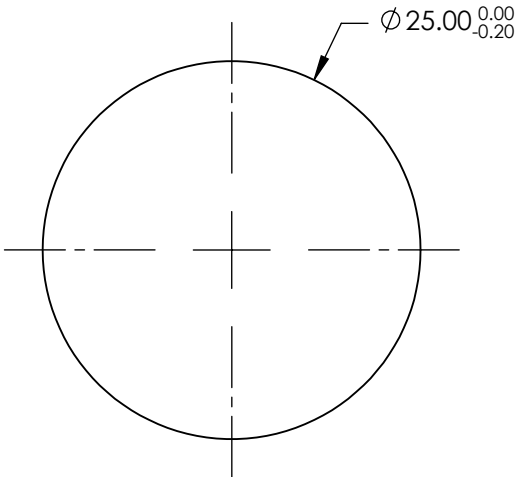


- NOTES:
- 1. SUBSTRATE: Fused Silica (Corning 7980)
 - 2. ROHS: COMPLIANT
 - 3. SURFACE S2 TO BE PARALLEL TO SURFACE S1 WITHIN <5 ARCMIN
 - 4. COATING(APPLY ACROSS CLEAR APERTURE)

S1 & S2: R(ABS) ≤0.25% @ 880nm
R(AVG) ≤1.25% @ 400 - 870nm
R(AVG) ≤1.25% @ 890 - 1000nm


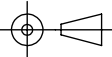
5. TRANSMITTED WAVEFRONT DISTORTION: ≤ 1λ

6. FINE GRIND SURFACE



FOR INFORMATION ONLY:
DO NOT MANUFACTURE
PARTS TO THIS DRAWING

SPECIFICATIONS SUBJECT TO CHANGE WITHOUT NOTICE
DIMENSIONS ARE FOR REFERENCE ONLY

	S1	S2	 Edmund Optics®			
SHAPE	PLANO	PLANO		TITLE	25mm Dia., 1mm Thick VIS-NIR Coated, 1λ Fused Silica Window	
SURFACE QUALITY	60-40	60-40		DWG NO	19849	SHEET 1 OF 1
CLEAR APERTURE	Ø 22.50	Ø 22.50				
BEVEL	PROTECTED AS NEEDED	PROTECTED AS NEEDED		ALL DIMS IN	mm	