

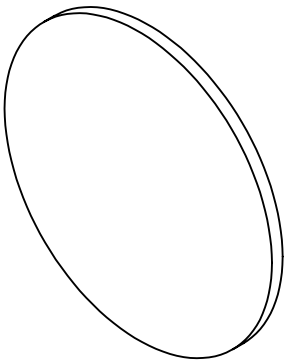
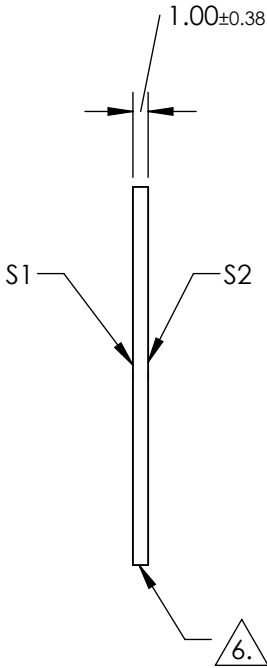
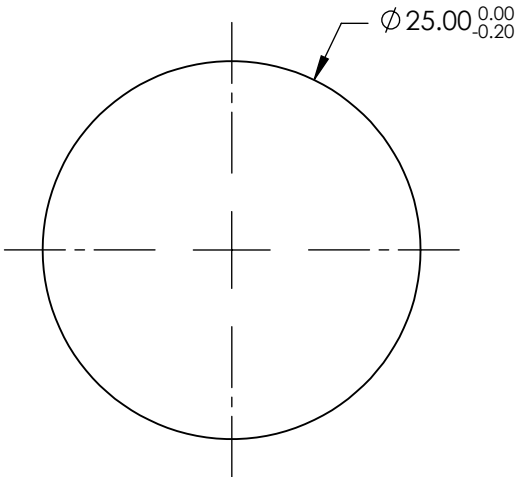
NOTES:

- 1. SUBSTRATE: Fused Silica (Corning 7980)
- 2. ROHS: COMPLIANT
- 3. SURFACE S2 TO BE PARALLEL TO SURFACE S1 WITHIN <5 ARCMIN
- 4. COATING(APPLY ACROSS CLEAR APERTURE)

S1 & S2: R(ABS) ≤1.0% @ 350 - 450nm
R(AVG) ≤1.5% @ 250 - 700nm


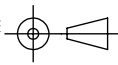
- 5. TRANSMITTED WAVEFRONT DISTORTION: ≤ 1λ

6. FINE GRIND SURFACE



**FOR INFORMATION ONLY:
DO NOT MANUFACTURE
PARTS TO THIS DRAWING**

SPECIFICATIONS SUBJECT TO CHANGE WITHOUT NOTICE
DIMENSIONS ARE FOR REFERENCE ONLY

	S1	S2	 Edmund Optics®			
SHAPE	PLANO	PLANO		TITLE	25mm Dia., 1mm Thick UV-VIS Coated, 1λ Fused Silica Window	
SURFACE QUALITY	60-40	60-40		DWG NO	19847	
CLEAR APERTURE	Ø 22.50	Ø 22.50				
BEVEL	PROTECTED AS NEEDED	PROTECTED AS NEEDED				
			ALL DIMS IN	mm	SHEET 1 OF 1	