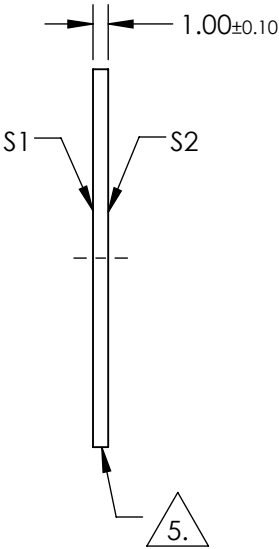
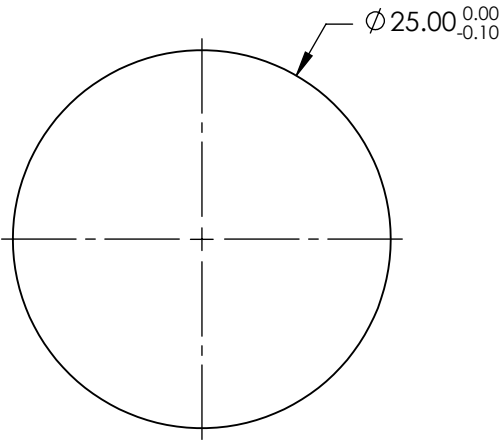



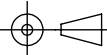
NOTES:

- 1. SUBSTRATE:  
Suprasil® 300
- 2. SURFACE S2 TO BE PARALLEL TO SURFACE S1 TO WITHIN < 5 ARCSEC
- 3. COATING (APPLY ACROSS COATING APERTURE)  
S1 & S2: BBAR (1650-3000nm)  
R(AVG) <1% @ 1650 - 3000nm  
R(ABS) <2% @ 1650 - 3000nm
- 4. TRANSMITTED WAVEFRONT DISTORTION P-V: ≤ 0.10 WAVE @ 632.8nm
- 5. FINE GRIND SURFACE
- 6. ROHS COMPLIANT



**FOR INFORMATION ONLY:**  
**DO NOT MANUFACTURE**  
**PARTS TO THIS DRAWING**

SPECIFICATIONS SUBJECT TO CHANGE WITHOUT NOTICE  
DIMENSIONS ARE FOR REFERENCE ONLY

	S1	S2	 Edmund Optics®			
SHAPE	PLANO	PLANO		TITLE	25mm Dia., 1mm Thick, BBAR (1650-3000nm) Coated, Suprasil Window	
SURFACE QUALITY	10-5	10-5		DWG NO	21245	SHEET 1 OF 1
WAVELENGTH RANGE	1650 - 3000nm	1650 - 3000nm				
BEVEL	PROTECTIVE AS NEEDED	PROTECTIVE AS NEEDED				
			ALL DIMS IN	mm		