

NOTES:

1. SUBSTRATE:
FUSED SILICA
2. ROHS COMPLIANT

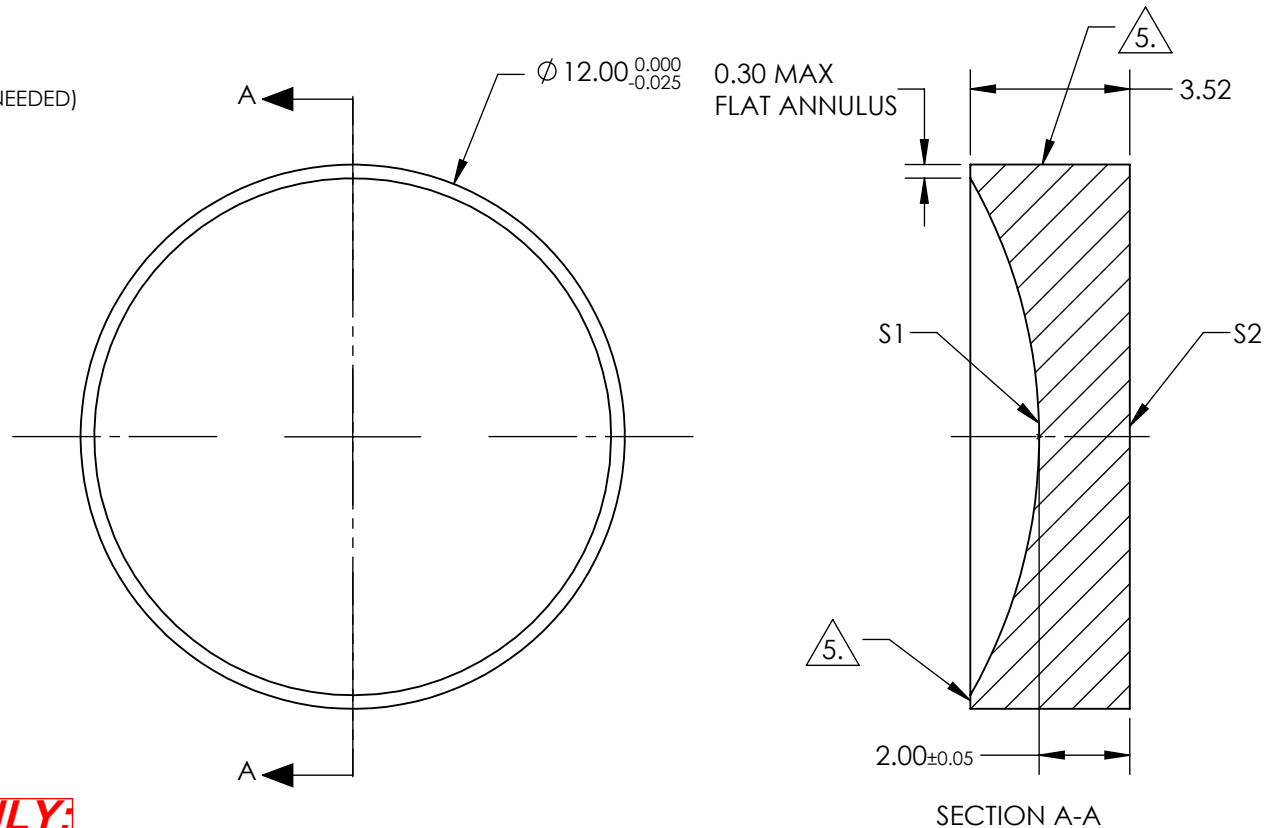
3. COATING (APPLY ACROSS CLEAR APERTURE)

S1 & S2: VIS-NIR (400-1000nm)
R(ABS) $\leq 0.25\%$ @ 880nm
R(AVG) $\leq 1.25\%$ @ 400 - 870nm
R(AVG) $\leq 1.25\%$ @ 890 - 1000nm

4. FINE GRIND SURFACE (ADD INK NOTE AS NEEDED)

5. FINE GRIND SURFACE

6. FOCAL LENGTH (EFL): -25mm
BACK FOCAL LENGTH (BFL): -26.37mm



FOR INFORMATION ONLY:
DO NOT MANUFACTURE
PARTS TO THIS DRAWING

SPECIFICATIONS SUBJECT TO CHANGE WITHOUT NOTICE
DIMENSIONS ARE FOR REFERENCE ONLY

	S1	S2
SHAPE	CONCAVE	PLANO
RADIUS	-11.46	INFINITY
SURFACE QUALITY	40-20	40-20
CLEAR APERTURE	$\varnothing 11$	$\varnothing 11$
BEVEL	PROTECTED AS NEEDED	PROTECTED AS NEEDED

THIRD ANGLE
PROJECTION

ALL DIMS IN mm

Edmund Optics®

TITLE

12.0mm Dia. x -25 FL, VIS-NIR, UV Plano-Concave Lens

DWG NO

21049

SHEET
1 OF 1