

NOTES:

1. SUBSTRATE:  
FUSED SILICA
2. ROHS COMPLIANT

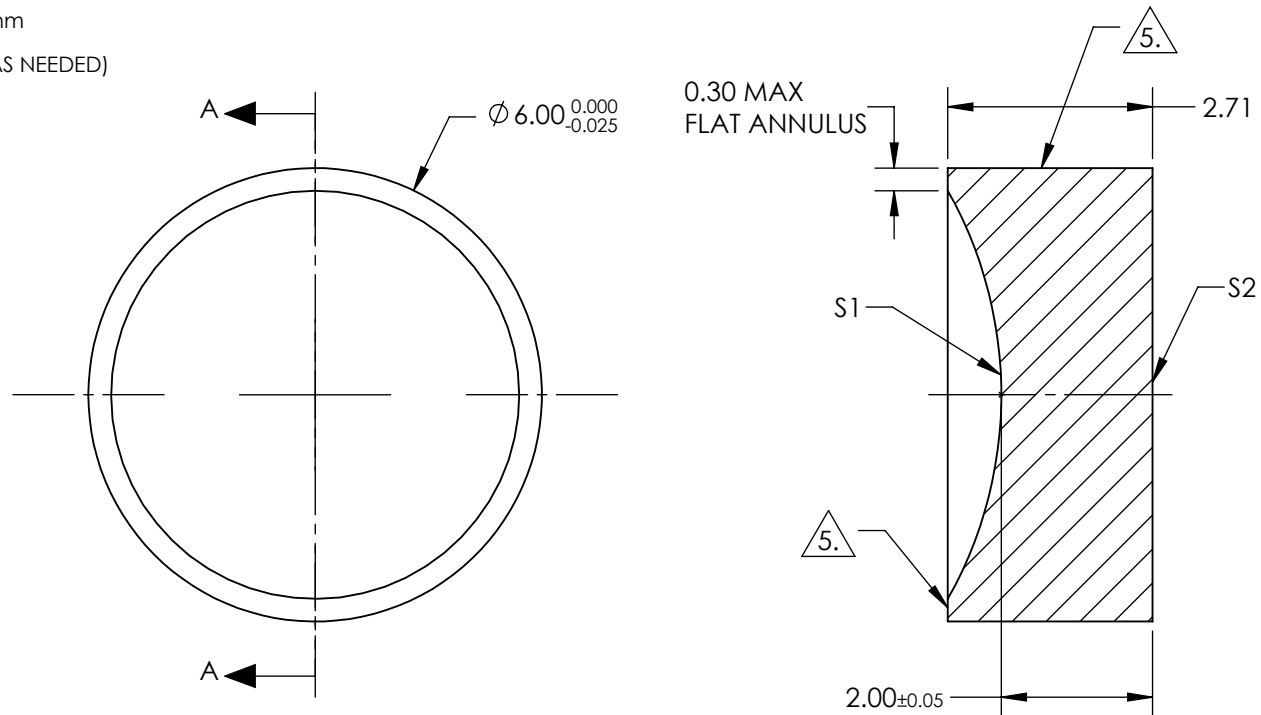
3. COATING (APPLY ACROSS CLEAR APERTURE)

S1 & S2: VIS-NIR (400-1000nm)  
R(ABS)  $\leq 0.25\%$  @ 880nm  
R(AVG)  $\leq 1.25\%$  @ 400 - 870nm  
R(AVG)  $\leq 1.25\%$  @ 890 - 1000nm

4. FINE GRIND SURFACE (ADD INK NOTE AS NEEDED)

5. FINE GRIND SURFACE

6. FOCAL LENGTH (EFL): -12mm  
BACK FOCAL LENGTH (BFL): -13.38mm



**FOR INFORMATION ONLY:**  
**DO NOT MANUFACTURE**  
**PARTS TO THIS DRAWING**

SPECIFICATIONS SUBJECT TO CHANGE WITHOUT NOTICE  
DIMENSIONS ARE FOR REFERENCE ONLY

	S1	S2
SHAPE	CONCAVE	PLANO
RADIUS	-5.50	INFINITY
SURFACE QUALITY	40-20	40-20
CLEAR APERTURE	$\phi 5.4$	$\phi 5.4$
BEVEL	PROTECTED AS NEEDED	PROTECTED AS NEEDED



ALL DIMS IN

mm

**Edmund Optics®**

TITLE

6.0mm Dia. x -12 FL, VIS-NIR, UV Plano-  
Concave Lens

DWG NO

21044

SHEET  
1 OF 1