

NOTES:

1. SUBSTRATE: UV Grade MgF2
2. SURFACE S2 TO BE PARALLEL WITH SURFACAE S1 TO WITHIN 1 ARCMIN
3. COATING (APPLY ACROSS CLEAR APERTURE)

OPTICAL DENSITY = 3.0 +0.22/-0.23 FROM 120 - 200nm

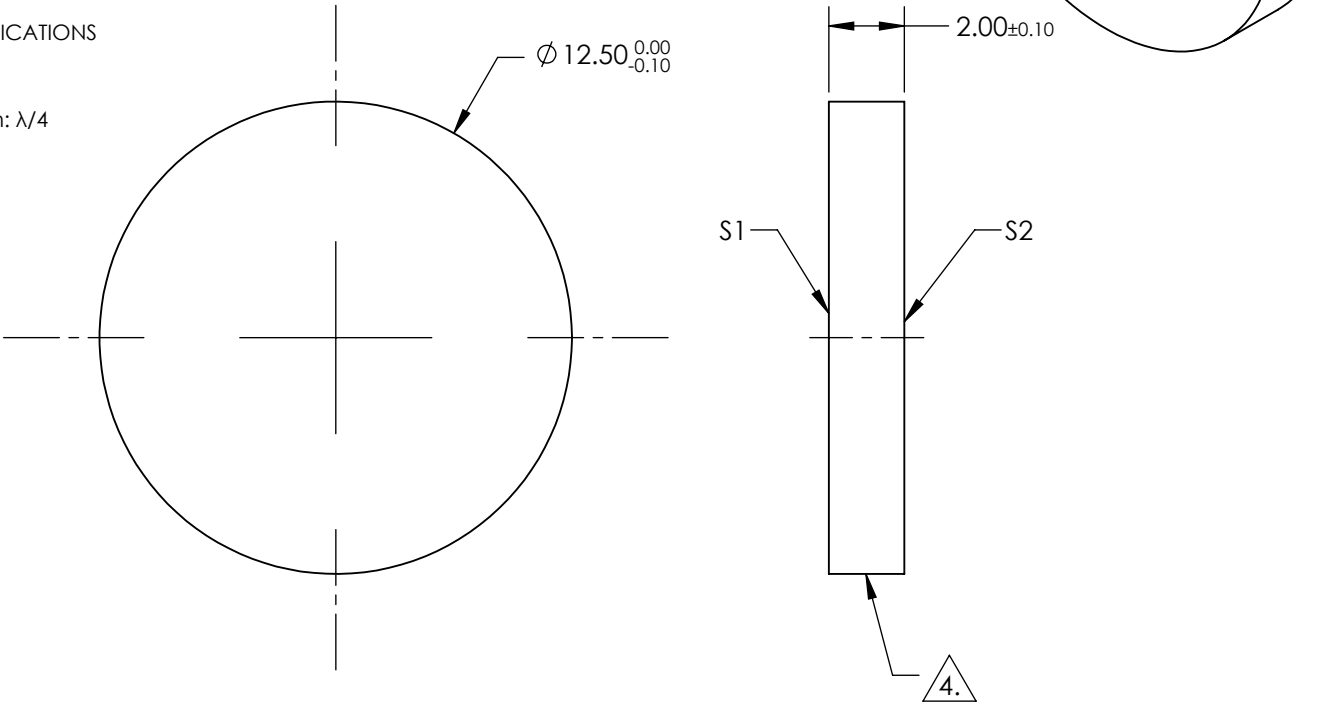
S1: COATED
S2: UNCOATED

**FOR INFORMATION ONLY:
DO NOT MANUFACTURE
PARTS TO THIS DRAWING**


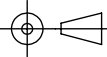
4. FINE GRIND SURFACE (ADD INK NOTE AS NEEDED)

5. POWER, IRREGULARITY, AND SURFACE QUALITY SPECIFICATIONS
APPLY ACROSS CLEAR APERTURE

6. TRANSMITTED WAVEFRONT DISTORTION P-V @ 632.8nm: $\lambda/4$



SPECIFICATIONS SUBJECT TO CHANGE WITHOUT NOTICE
DIMENSIONS ARE FOR REFERENCE ONLY

	S1	S2	<div> Edmund Optics®</div>			
SHAPE	PLANO	PLANO				
SURFACE QUALITY	40-20	40-20	<div>THIRD ANGLE PROJECTION</div> 	TITLE 3.0 OD 12.5mm Diameter VUV ND Filter		
CLEAR APERTURE	Ø 10	Ø 10				
COATING APERTURE	Ø 10	Ø 10				
BEVEL	PROTECTED AS NEEDED	PROTECTED AS NEEDED	ALL DIMS IN	mm	DWG NO 20139	SHEET 1 OF 1