

NOTES:

1. SUBSTRATE: UV Grade MgF2
2. SURFACE S2 TO BE PARALLEL WITH SURFACE S1 TO WITHIN 1 ARCMIN
3. COATING (APPLY ACROSS CLEAR APERTURE)

OPTICAL DENSITY = 1.0 +0.09/-0.08 FROM 120 - 200nm

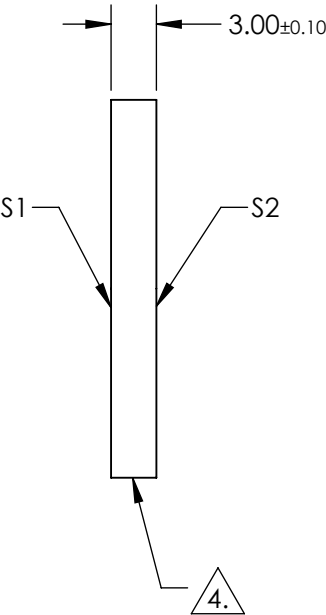
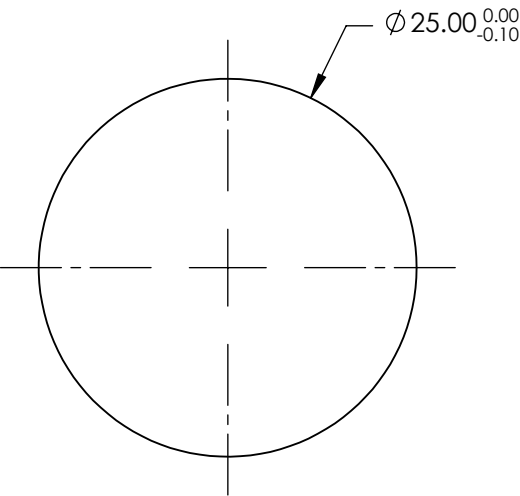
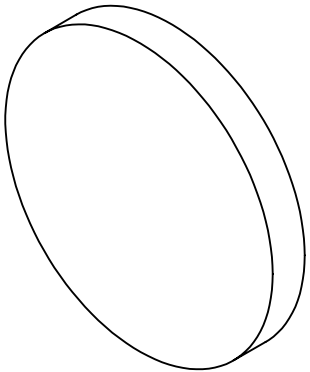
S1: COATED  
S2: UNCOATED

**FOR INFORMATION ONLY:  
DO NOT MANUFACTURE  
PARTS TO THIS DRAWING**

4. FINE GRIND SURFACE (ADD INK NOTE AS NEEDED)



5. POWER, IRREGULARITY, AND SURFACE QUALITY SPECIFICATIONS  
APPLY ACROSS CLEAR APERTURE

6. TRANSMITTED WAVEFRONT DISTORTION P-V @ 632.8nm:  $\lambda/4$



SPECIFICATIONS SUBJECT TO CHANGE WITHOUT NOTICE  
DIMENSIONS ARE FOR REFERENCE ONLY

	S1	S2
SHAPE	PLANO	PLANO
SURFACE QUALITY	40-20	40-20
CLEAR APERTURE	Ø 20	Ø 20
COATING APERTURE	Ø 20	Ø 20
BEVEL	PROTECTED AS NEEDED	PROTECTED AS NEEDED

		 Edmund Optics®	
		TITLE	1.0 OD 25mm Diameter VUV ND Filter
ALL DIMS IN	mm	DWG NO	20136
			SHEET 1 OF 1