

NOTES:

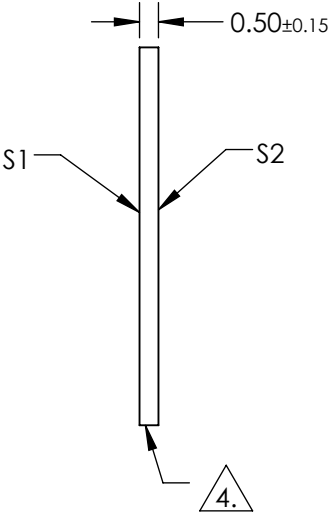
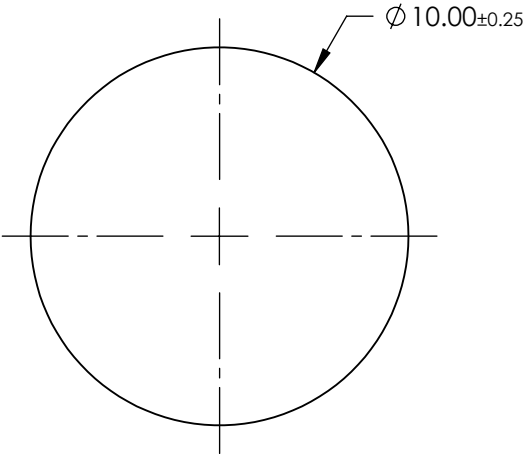
- 1. SUBSTRATE:
Sapphire (Al₂O₃)
- 2. SURFACE S2 TO BE PARALLEL WITH SURFACE S1 TO WITHIN ≤ 3.5 ARCMIN
- 3. COATING (APPLY ACROSS CLEAR APERTURE)

S1 & S2: R(ABS) ≤1.5% @ 750 - 800nm
R(ABS) ≤1.0% @ 800 - 1550nm
R(AVG)avg ≤0.7% @ 750 - 1550nm

4. FINE GRIND SURFACE

- 5. ROHS COMPLIANT

FOR INFORMATION ONLY:
DO NOT MANUFACTURE
PARTS TO THIS DRAWING



SPECIFICATIONS SUBJECT TO CHANGE WITHOUT NOTICE
DIMENSIONS ARE FOR REFERENCE ONLY

	S1	S2
SHAPE	PLANO	PLANO
CLEAR APERTURE	Ø9.00	Ø9.00
SURFACE FLATNESS	2λ	2λ
SURFACE QUALITY	80-50	80-50
BIREFRINGENCE (n _o -n _e)	0.008	0.008
BEVEL	PROTECTIVE AS NEEDED	PROTECTIVE AS NEEDED

THIRD ANGLE
PROJECTION

ALL DIMS IN mm

 **Edmund Optics®**

TITLE	10mm Dia., 0.5mm Thick, NIR II AR Coated Sapphire Window	
DWG NO	20914	SHEET 1 OF 1