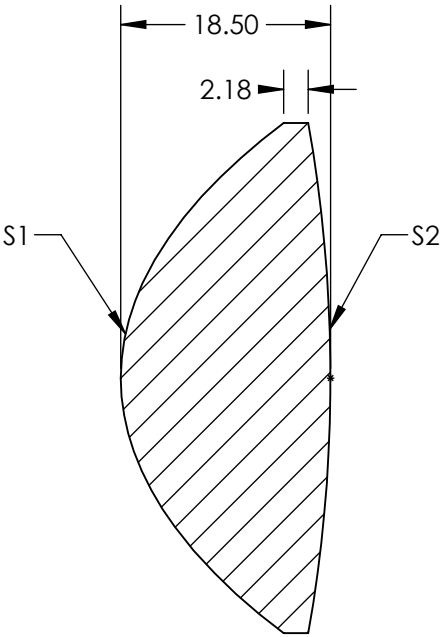
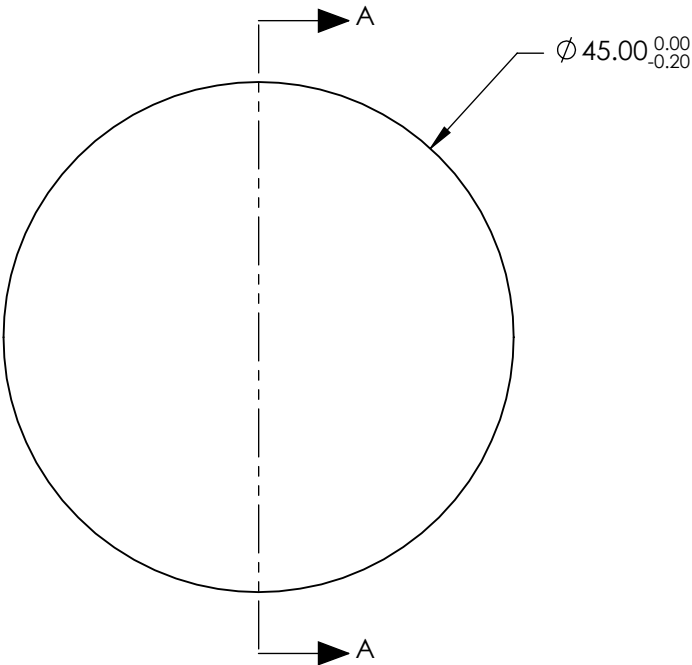


- NOTES:
- 1. SUBSTRATE:
H-K51
 - 2. COATING (APPLY ACROSS CLEAR APERTURE)

S1: NONE
S2: NONE
 - 3. CENTERING: ≤30 ARCMIN



SECTION A-A

**FOR INFORMATION ONLY:
DO NOT MANUFACTURE
PARTS TO THIS DRAWING**

SPECIFICATIONS SUBJECT TO CHANGE WITHOUT NOTICE
DIMENSIONS ARE FOR REFERENCE ONLY

PARTS TO THIS DRAWING			EFL @ 587.6nm	32	 Edmund Optics®		
	S1	S2	BFL @ 587.6nm	20.9			
SHAPE	CONVEX	CONVEX			TITLE	45mm Dia. x 32mm FL, Aspheric Condenser Lens	
SURFACE QUALITY	80-50 (typical)	80-50 (typical)					
CLEAR APERTURE	Ø 41.00	Ø 41.00	ALL DIMS IN		DWG NO	19522	
BEVEL	PROTECTED AS NEEDED	PROTECTED AS NEEDED					
					SHEET 1 OF 1		