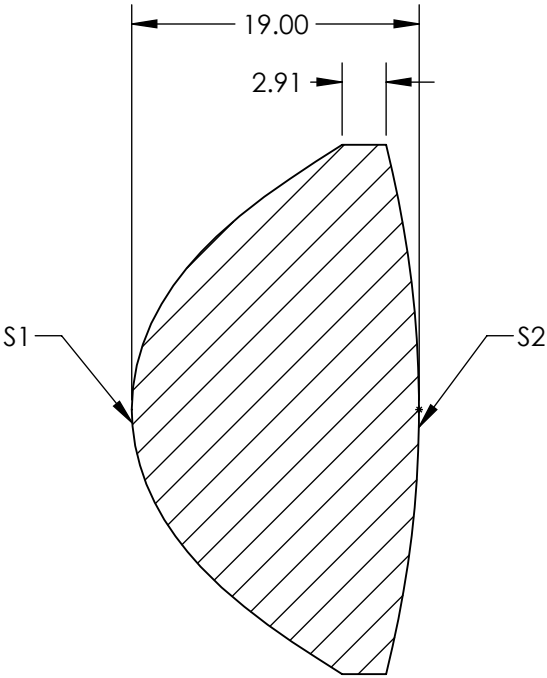
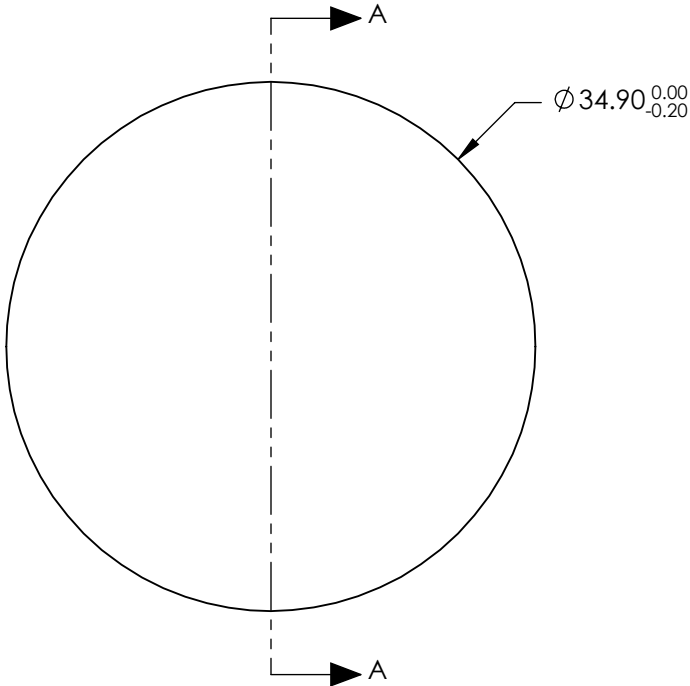


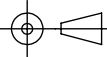
- NOTES:
- 1. SUBSTRATE:  
H-K51
  - 2. COATING (APPLY ACROSS CLEAR APERTURE)  
  
S1: NONE  
S2: NONE
  - 3. CENTERING: ≤30 ARCMIN



SECTION A-A

**FOR INFORMATION ONLY:  
DO NOT MANUFACTURE  
PARTS TO THIS DRAWING**

SPECIFICATIONS SUBJECT TO CHANGE WITHOUT NOTICE  
DIMENSIONS ARE FOR REFERENCE ONLY

	S1	S2	EFL @ 587.6nm	21.6	 <b>Edmund Optics®</b>		
			BFL @ 587.6nm	11			
SHAPE	CONVEX	CONVEX			TITLE	34.9mm Dia. x 21.6mm FL, Aspheric Condenser Lens	
SURFACE QUALITY	80-50 (typical)	80-50 (typical)					
CLEAR APERTURE	Ø 31.40	Ø 31.40	ALL DIMS IN		DWG NO	19520	SHEET 1 OF 1
BEVEL	PROTECTED AS NEEDED	PROTECTED AS NEEDED					