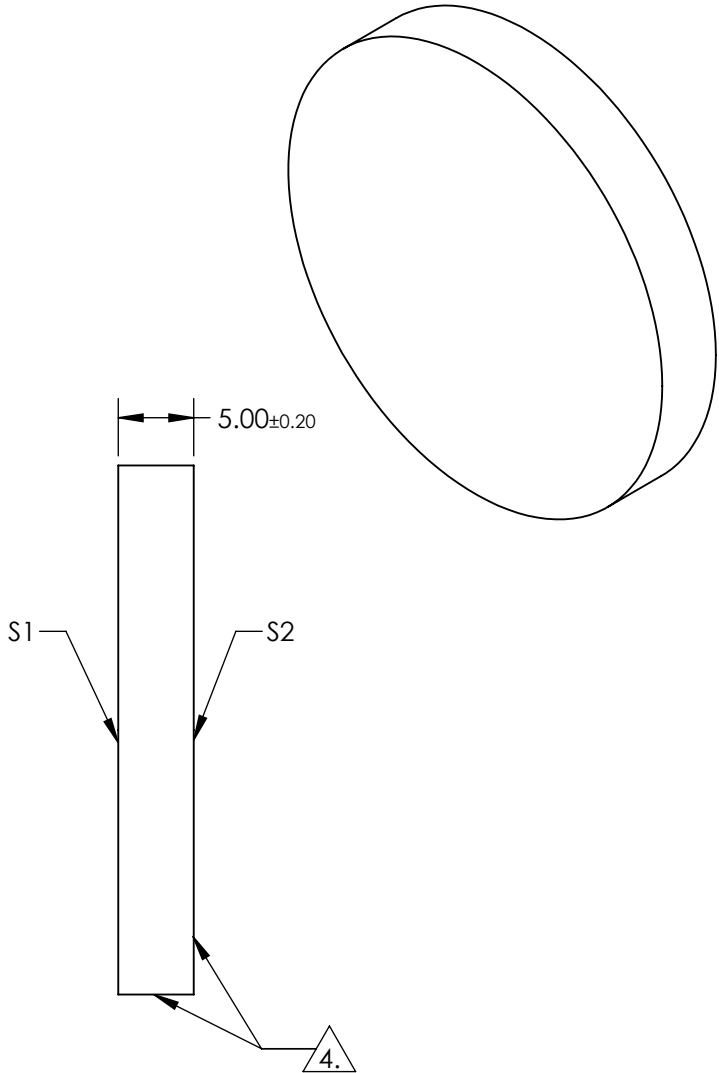
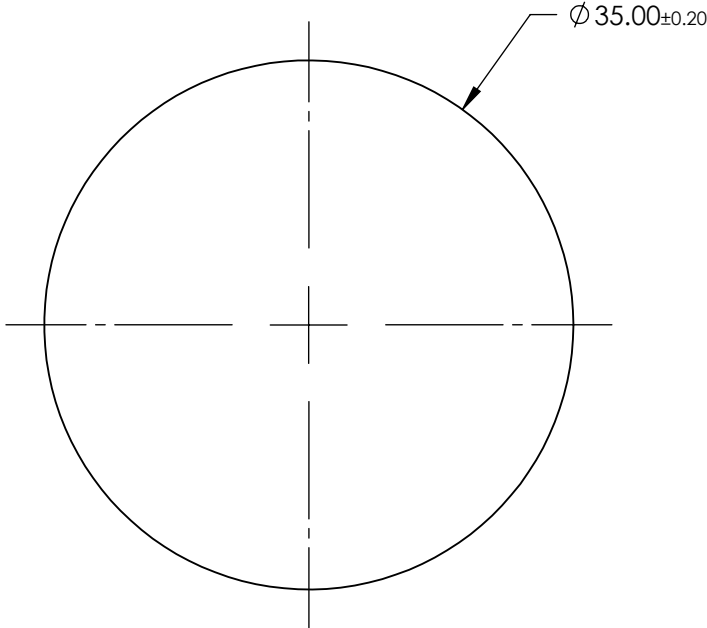


- NOTES:
- 1. SUBSTRATE: FUSED SILICA
 - 2. SURFACE S2 TO BE PARALLEL WITH SURFACE S1 TO WITHIN <30 ARCSEC
 - 3. COATING (APPLY ACROSS CLEAR APERTURE)
 - S1:R(AVG) ≥92% @ 190 - 250nm
 - R(AVG) ≥83% @ 250 - 900nm
 - S2: COMMERCIAL POLISH

4. S2 & EDGES FINE GRIND SURFACE

5. POWER, IRREGULARITY, AND SURFACE QUALITY SPECIFICATION APPLY ACROSS CLEAR APERTURE

6. ROHS COMPLIANT




**FOR INFORMATION ONLY:
DO NOT MANUFACTURE
PARTS TO THIS DRAWING**

SPECIFICATIONS SUBJECT TO CHANGE WITHOUT NOTICE
DIMENSIONS ARE FOR REFERENCE ONLY

	S1	S2
SHAPE	PLANO	PLANO
SURFACE QUALITY	20-10	N/A
SURFACE FLATNESS	$\lambda/10$	N/A
COATING TYPE	METAL	N/A
COATING	ENHANCED ALUMINUM (190-900nm)	N/A
BEVEL	PROTECTED AS NEEDED	PROTECTED AS NEEDED

THIRD ANGLE
PROJECTION

ALL DIMS IN mm

 **Edmund Optics®**

TITLE	35mm Dia., Enhanced Deep UV (DUV) Mirror		
DWG NO	18746	SHEET 1 OF 1	