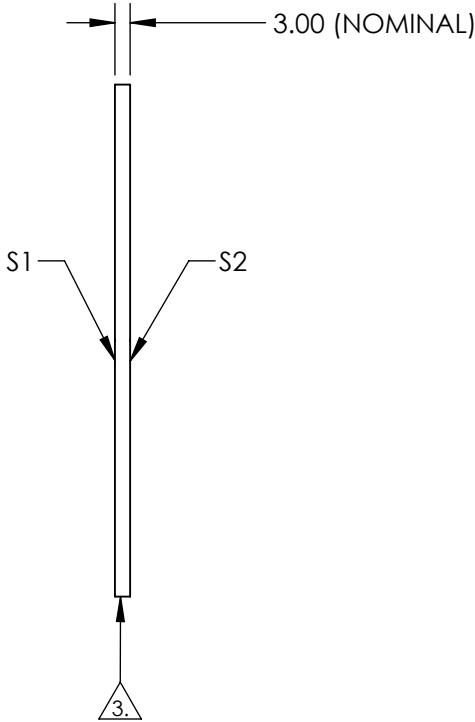
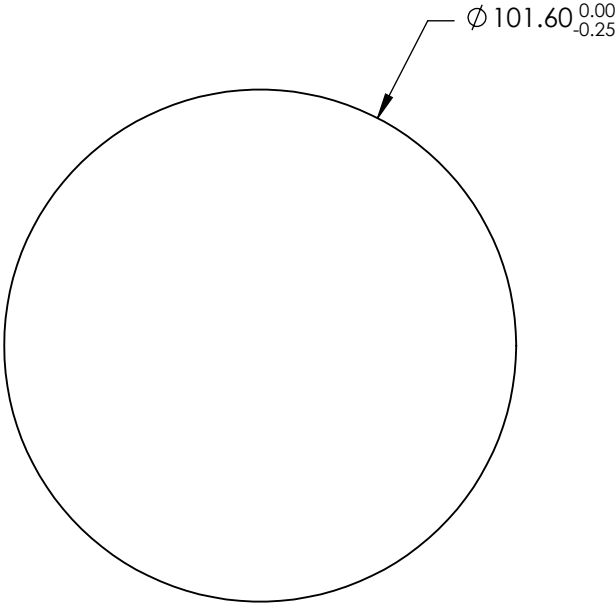


NOTES:

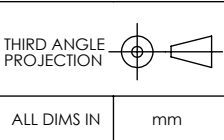
1. SUBSTRATE: Float Glass
2. COATING (APPLY ACROSS CLEAR APERTURE)  
S1: Enhanced Aluminum (450-650nm)  
R(AVG) ≥95% @ 450 - 650nm @ 45°
- S2: NONE
3. EDGES GROUND
4. RoHS COMPLIANT



**FOR INFORMATION ONLY:  
DO NOT MANUFACTURE  
PARTS TO THIS DRAWING**

SPECIFICATIONS SUBJECT TO CHANGE WITHOUT NOTICE  
DIMENSIONS ARE FOR REFERENCE ONLY

	S1	S2
SHAPE	PLANO	PLANO
SURFACE QUALITY	60-40	N/A
SURFACE FLATNESS	4 - 6λ	N/A
CLEAR APERTURE	Ø 91.44	N/A
BEVEL	PROTECTED AS NEEDED	PROTECTED AS NEEDED



**EO**® Edmund Optics®

TITLE	101.6mm Dia., Enhanced Aluminum, 4-6λ Mirror		
DWG NO	18924		SHEET 1 OF 1