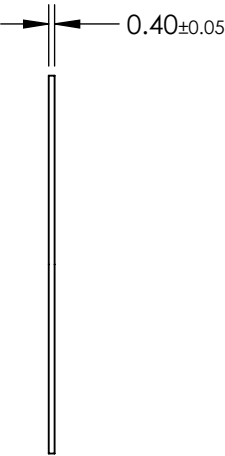
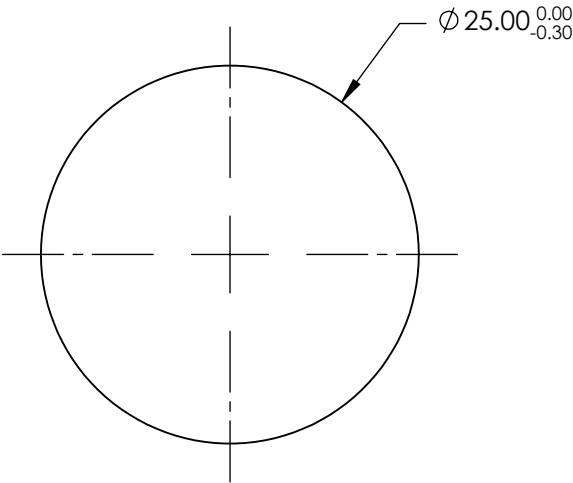
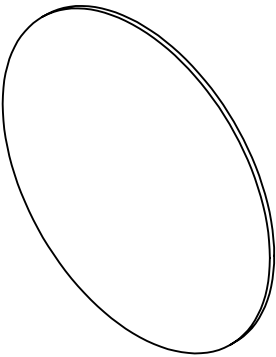


NOTES:

1. SUBSTRATE: POLYMER FILM XP42-40
2. OPERATING TEMPERATURE: -40 TO +80
3. WAVELENGTH RANGE: 400 - 700 nm
4. POLARIZATION: >99.98
5. TRANSMISSION (%):  
SINGLE: 42 ±2  
PARALLEL: 36.4  
CROSSED: <0.004
6. ROHS COMPLIANT



**FOR INFORMATION ONLY:**  
**DO NOT MANUFACTURE**  
**PARTS TO THIS DRAWING**

SPECIFICATIONS SUBJECT TO CHANGE WITHOUT NOTICE  
DIMENSIONS ARE FOR REFERENCE ONLY

 **Edmund Optics®**

THIRD ANGLE PROJECTION 		TITLE	25mm Dia. Linear Polarizing Film (XP42-40)	
ALL DIMS IN	mm	DWG NO	19012	SHEET 1 OF 1