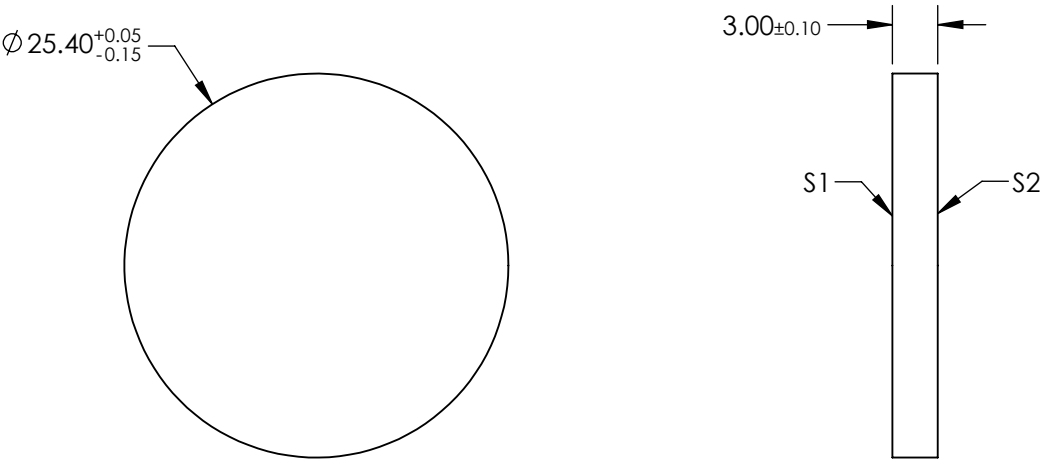


NOTES:

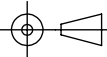
- 1. SUBSTRATE: FUSED SILICA
- 2. BEAM MODE: SM OR MM
- 3. SAMPLED ENERGY: 82
- 4. SAMPLED ANGLE: 3.8
- 5. COATING:  
LASER V-COAT (1064nm)
- 6. BEAM SPECIFICATION:  
MINIMUM BEAM DIAMETER: 0.48mm



**FOR INFORMATION ONLY:  
DO NOT MANUFACTURE  
PARTS TO THIS DRAWING**

SPECIFICATIONS SUBJECT TO CHANGE WITHOUT NOTICE  
DIMENSIONS ARE FOR REFERENCE ONLY



	S1	S2	THIRD ANGLE PROJECTION 		TITLE	1064nm, 25.4mm Dia., 1x6 SPOT ARRAY, DIFFRACTIVE BEAMSPLITTER	
SHAPE	PLANO	PLANO					
MIN CLEAR APERTURE	Ø22.9	Ø22.9	ALL DIMS IN	mm	DWG NO	14689	SHEET 1 OF 1
BEVEL MAX FACE	PROTECTIVE AS NEEDED	PROTECTIVE AS NEEDED					