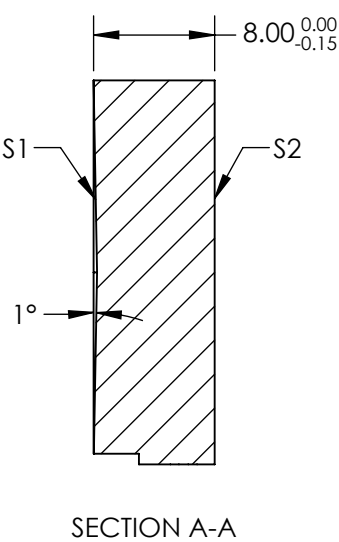
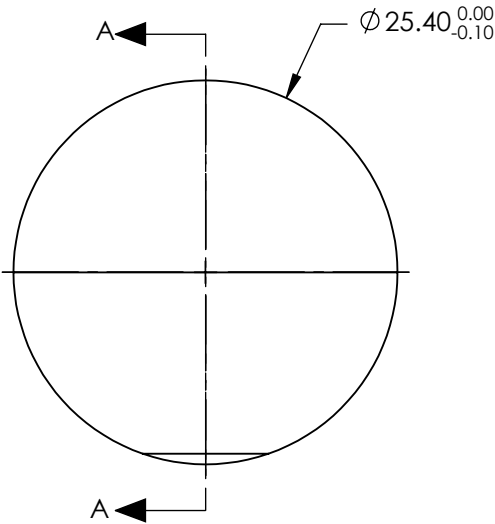


NOTES:

- 1. SUBSTRATE: ALUMINUM
- 2. COATING (APPLY ACROSS COATING APERTURE)
S1: R(ABS) > 99% @ 750 - 850nm
S2: NONE
- 3. FINE GRIND SURFACE
- 4. OFF-AXIS ANGLE (°): 30
- 5. REFLECTED WAVEFRONT ERROR, P-V: < $\lambda/10$
- 6. SURFACE ROUGHNESS: < 4nm RMS
- 7. RoHS: COMPLIANT

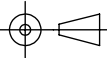


**FOR INFORMATION ONLY:
DO NOT MANUFACTURE
PARTS TO THIS DRAWING**

SPECIFICATIONS SUBJECT TO CHANGE WITHOUT NOTICE
DIMENSIONS ARE FOR REFERENCE ONLY

	S1	S2
SHAPE	AXICON	PLANO
SURFACE QUALITY	40 - 20	N/A
CLEAR APERTURE	Ø22.86	N/A
BEVEL	PROTECTIVE AS NEEDED	PROTECTIVE AS NEEDED

THIRD ANGLE
PROJECTION



ALL DIMS IN

mm



Edmund Optics®

TITLE

1° AXICON ANGLE, 750 - 850°, OFF-AXIS
REFLECTIVE AXICON

DWG NO

14561

SHEET
1 OF 1