

1. SUBSTRATE:
FUSED SILICA

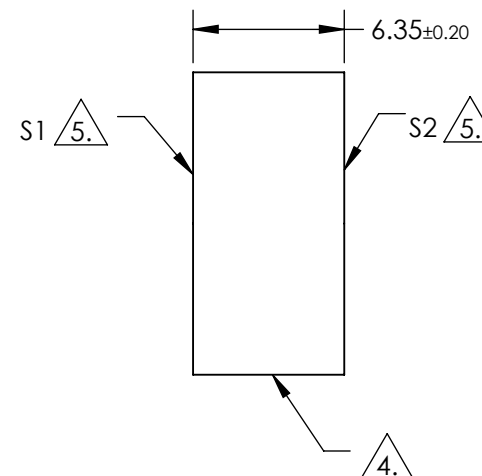
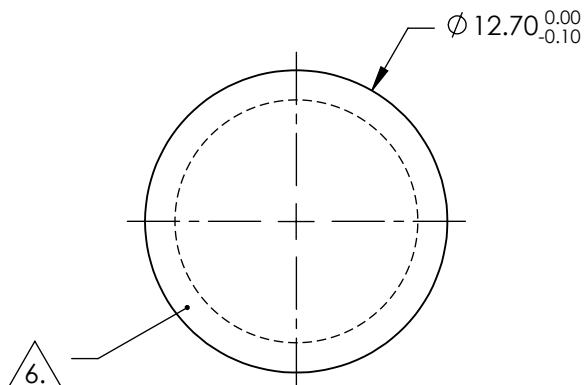
3. COATING PERFORMANCES ACROSS CLEAR APERTURE:

T(ABS) > 99.8% @ 532nm @ 0° AOI

4. FINE GRIND SURFACE



5. SURFACES ARE EXTREMELY FRAGILE, ANY CONTACT TO OPTICAL SURFACE WILL AFFECT PERFORMANCE. DO NOT TOUCH SURFACES AND DO NOT WIPE CLEAN.

6. UNTREATED ANNULUS 1.25mm FROM EDGE



**FOR INFORMATION ONLY:
DO NOT MANUFACTURE
PARTS TO THIS DRAWING**

SPECIFICATIONS SUBJECT TO CHANGE WITHOUT NOTICE
DIMENSIONS ARE FOR REFERENCE ONLY

| | | | | | | | |
|-----------------|----------------------|----------------------|---|-------|--|-------|-----------------|
| | S1 | S2 | | |  Edmund Optics® | | |
| SHAPE | PLANO | PLANO | <div>THIRD ANGLE PROJECTION</div>  | TITLE | 12.7mm Dia., 6.35mm THICK, 532nm NEBULAR™ LASER LINE WINDOW | | |
| SURFACE QUALITY | 10-5 | 10-5 | | | | | |
| CLEAR APERTURE | Ø10.16 | Ø10.16 | | | | | |
| BEVEL | PROTECTIVE AS NEEDED | PROTECTIVE AS NEEDED | ALL DIMS IN | mm | DWG NO | 14671 | SHEET 1 OF 1 |