

NOTES:

- 1. SUBSTRATE: UV FUSED SILICA
- 2. COATING SPEC (APPLY ACROSS CLEAR APERTURE):

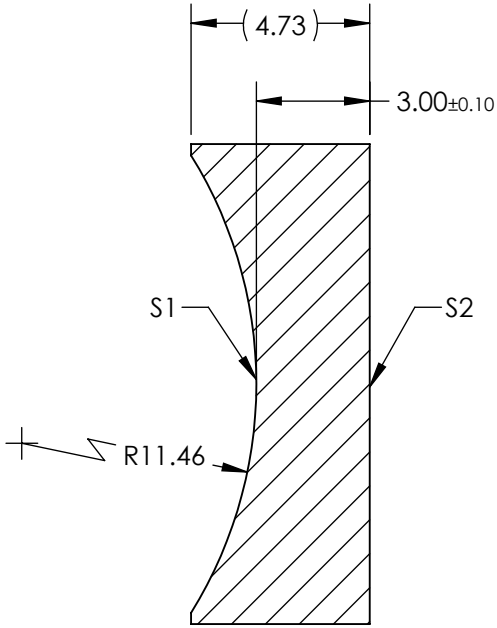
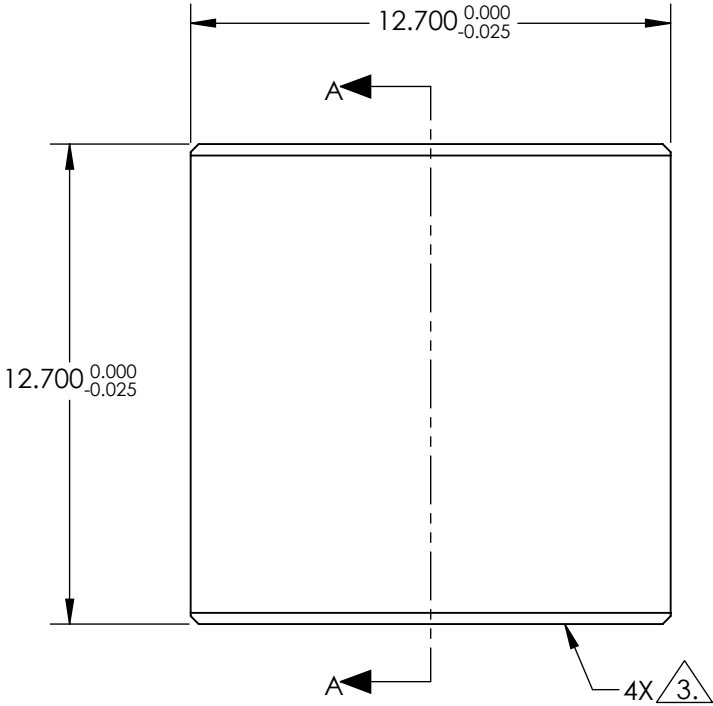
S1 & S2: R(ABS) <0.25% @ 355nm @ 0°AOI

3. FINE GRIND SURFACE

- 4. POWER, IRREGULARITY, AND SURFACE QUALITY SPECIFICATIONS
APPLY ACROSS CLEAR APERTURE

- 5. ROHS COMPLIANT

FOR INFORMATION ONLY:
DO NOT MANUFACTURE
PARTS TO THIS DRAWING



SECTION A-A

SPECIFICATIONS SUBJECT TO CHANGE WITHOUT NOTICE
DIMENSIONS ARE FOR REFERENCE ONLY

	S1	S2
SHAPE	CONCAVE	INFINITY
SURFACE QUALITY	20-10	20-10
CLEAR APERTURE	11.43 x 11.43	11.43 x 11.43
BEVEL	PROTECTIVE AS NEEDED	PROTECTIVE AS NEEDED



ALL DIMS IN

mm

Edmund Optics®

TITLE

12.7mm Square x -25 FL, 355nm AR Coated,
Laser Grade PCV Cylinder Lens

DWG NO

13476

SHEET
1 OF 1