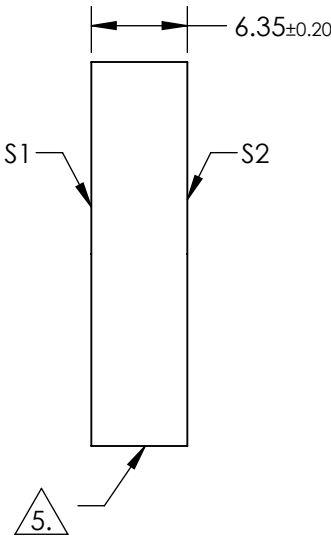
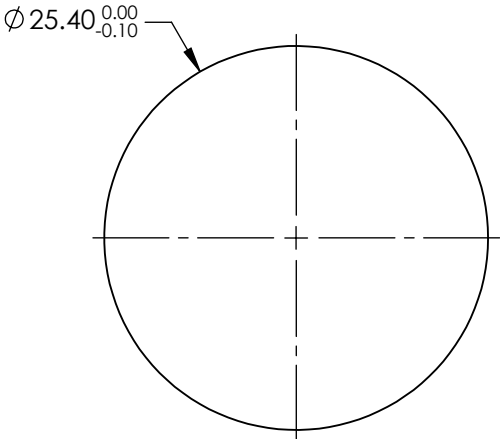


NOTES:

- 1. SUBSTRATE: FUSED SILICA
- 2. RoHS: COMPLIANT
- 3. SURFACE S2 TO BE PARALLEL TO SURFACE S1 TO WITHIN < 3 ARCMIN
- 4. COATING (APPLY ACROSS COATING APERTURE)  
S1& S2: R(ABS) <0.10% @ 532nm @ 0° AOI


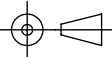
DAMAGE THRESHOLD,  
PULSED: 10 J/cm² @ 532nm, 20ns, 20Hz

5. FINE GRIND SURFACE



**FOR INFORMATION ONLY:  
DO NOT MANUFACTURE  
PARTS TO THIS DRAWING**

SPECIFICATIONS SUBJECT TO CHANGE WITHOUT NOTICE  
DIMENSIONS ARE FOR REFERENCE ONLY

		S1	S2				 Edmund Optics®	
SHAPE		PLANO	PLANO		TITLE		25.4mm DIA., 6.35mm THICK, 532nm, Nd:YAG IBS LASER LINE WINDOW	
SURFACE QUALITY		10-5	10-5		DWG NO		12979	
CLEAR APERTURE		Ø22.86	Ø22.86				SHEET 1 OF 1	
BEVEL		PROTECTIVE AS NEEDED	PROTECTIVE AS NEEDED		ALL DIMS IN	mm		