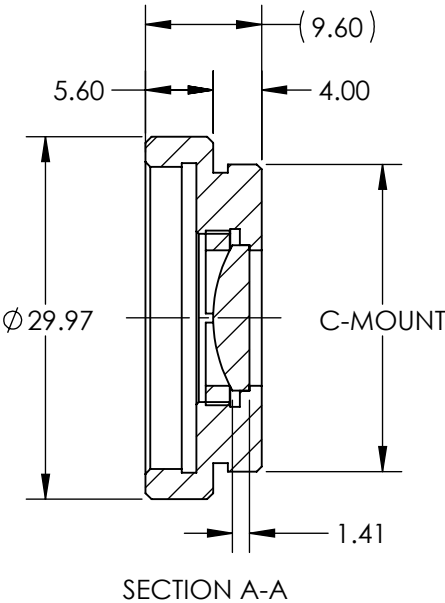
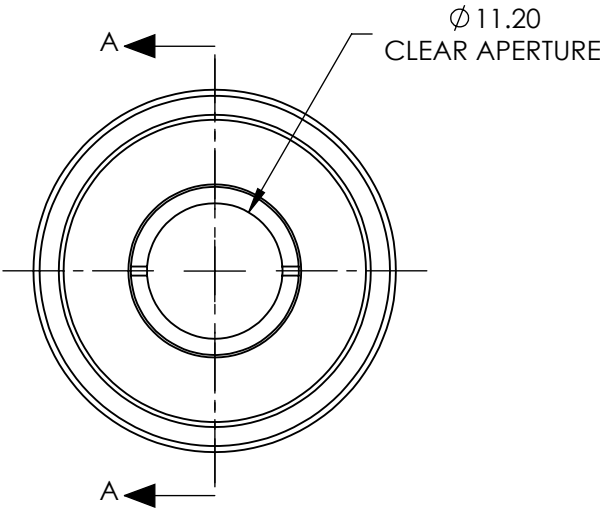


NOTES:

1. SUBSTRATE:  
N-SF5
2. ROHS COMPLIANT
3. COATING (APPLY ACROSS COATING APERTURE)  
S1 & S2: MgF2 (400-700nm)  
R(AVG)  $\leq 1.75\%$  @ 400 - 700nm
4. FOCAL LENGTH (EFL):  $18.00 \pm 1\%$   
FOCAL LENGTH (BFL) FROM MECHANICAL HOUSING: 15.22
5. LENS INCLUDED: #32-007  
MOUNT INCLUDED: #54-615

**FOR INFORMATION ONLY:  
DO NOT MANUFACTURE  
PARTS TO THIS DRAWING**



SPECIFICATIONS SUBJECT TO CHANGE WITHOUT NOTICE  
DIMENSIONS ARE FOR REFERENCE ONLY

	S1	S2
SHAPE	CONVEX	PLANO
RADIUS	12.11	INFINITY
SURFACE QUALITY	40-20	40-20
POWER AT 632.8nm	$1.5\lambda$	$1.5\lambda$
IRREGULARITY AT 632.8nm	$\lambda/4$	$\lambda/4$



ALL DIMS IN mm

**Edmund Optics®**

TITLE

11.2mm CA, 18mm FL, Mounted MgF2  
Coated Plano-Convex Lens

DWG NO

12915

SHEET  
1 OF 1