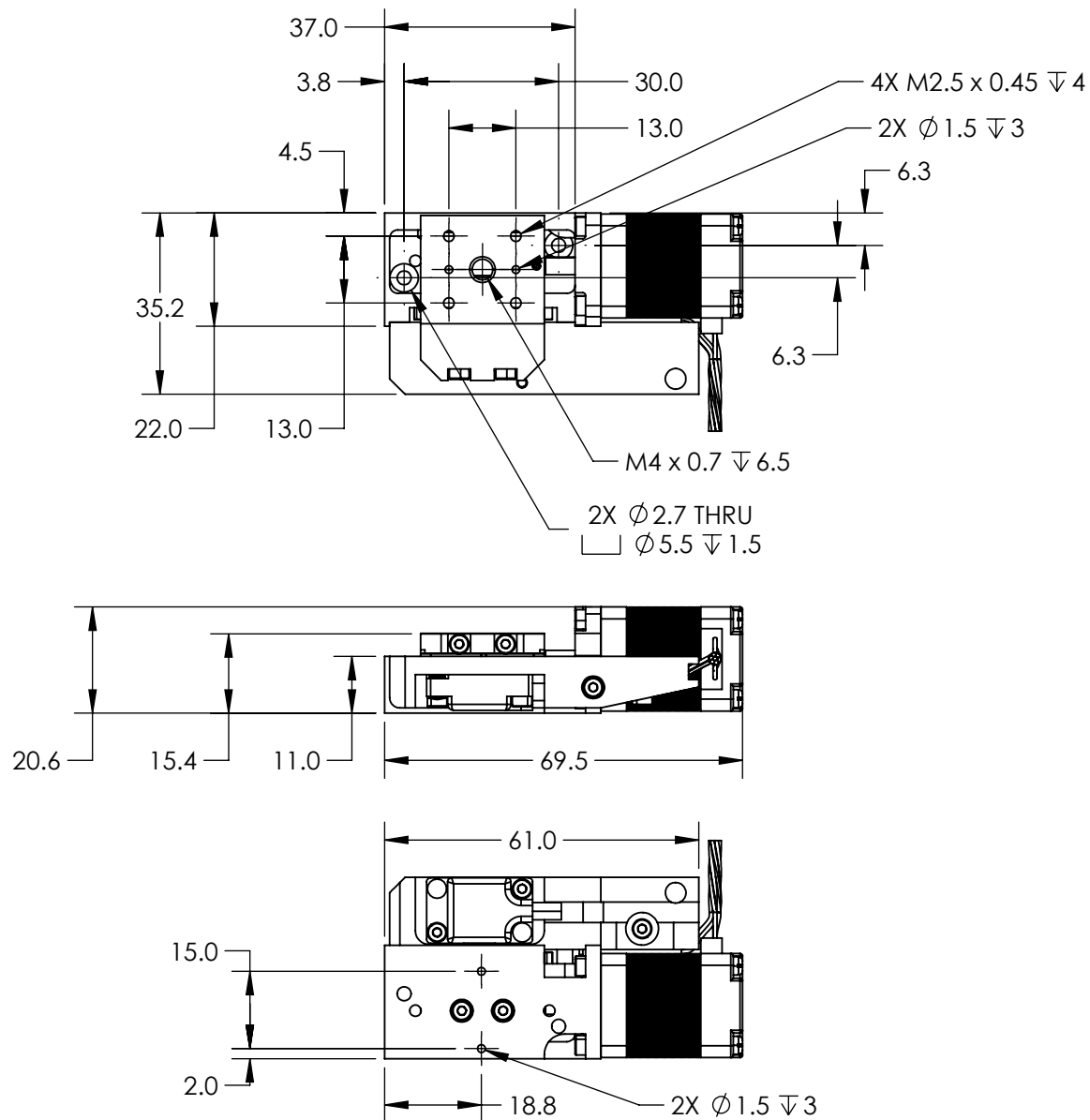


NOTES:

1. TYPE OF MOVEMENT: Linear (X)
TRAVEL (mm): 10
2. TYPE OF DRIVE: Stepping Motor
TYPE OF MOTOR: 2-Phase Stepper
3. LOAD CAPACITY (kg): 1
4. RESOLUTION (um): 0.5
5. PITCH (urad): ± 150
YAW (urad): ± 150
ACCURACY (um): 3
FLATNESS (um): ± 2.5
6. SPEED (mm/s): Maximum: 5
7. REPEATABILITY (um): Bi-directional: ± 1 Uni-directional: 1



**FOR INFORMATION ONLY:
DO NOT MANUFACTURE
PARTS TO THIS DRAWING**

SPECIFICATIONS SUBJECT TO
CHANGE WITHOUT NOTICE
DIMENSIONS ARE FOR
REFERENCE ONLY

EO[®] Edmund Optics[®]

THIRD ANGLE PROJECTION		TITLE	10mm Travel Precision Compact Motorized Stage	
ALL DIMS IN	mm	DWG NO	88553	SHEET 1 OF 1