

NOTES:

1. SUBSTRATE: FUSED SILICA
2. SURFACE S2 TO BE PARALLEL TO SURFACE S1 TO WITHIN < 10 ARCSEC
3. COATING (APPLY ACROSS COATING APERTURE)  
 S1:  $R_a = 90 \pm 3\%$  @ 715-980nm @  $45^\circ$   
 $R_p = 83 \pm 3\%$  @ 715-980nm @  $45^\circ$   
 $R_s = 97 \pm 3\%$  @ 715-980nm @  $45^\circ$

GDD (T):  $\pm 65 \text{ fs}^2$  @  $45^\circ$   
 GDD (R):  $\pm 75 \text{ fs}^2$  @  $45^\circ$

S2:  $AR_s < 2\%$  @ 650-1100nm @  $45^\circ$   
 $AR_p < 1.5\%$  @ 650-1100nm @  $45^\circ$

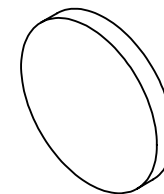
GDD (T):  $\pm 65 \text{ fs}^2$  @  $45^\circ$   
 GDD (R):  $\pm 75 \text{ fs}^2$  @  $45^\circ$

4. FINE GRIND SURFACE

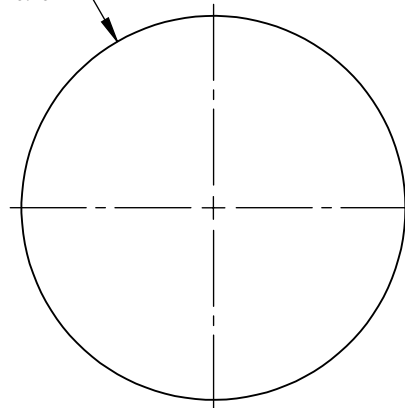
5. TRANSMITTED WAVEFRONT DISTORTION @ 632.8nm:  
 $\lambda/8$  @ 633nm @  $45^\circ$  AOI

6. RoHS: COMPLIANT

**FOR INFORMATION ONLY:  
 DO NOT MANUFACTURE  
 PARTS TO THIS DRAWING**



$\varnothing 25.40^{+0.00}_{-0.10}$



$3.00^{+0.00}_{-0.10}$

S1

S2

4.

SPECIFICATIONS SUBJECT TO CHANGE WITHOUT NOTICE  
 DIMENSIONS ARE FOR REFERENCE ONLY

	S1	S2
SHAPE	PLANO	PLANO
SURFACE FLATNESS @ 632.8nm	$\lambda/3$	N/A
SURFACE QUALITY	10 - 5	10 - 5
CLEAR APERTURE	$\varnothing 20.32$	$\varnothing 20.32$
BEVEL	PROTECTIVE AS NEEDED	PROTECTIVE AS NEEDED



ALL DIMS IN

mm



Edmund Optics®

TITLE

25.4mm NON-POLARIZING BEAM SPLITTER R/T  
 90:10

DWG NO

13830

SHEET  
 1 OF 1