

1. SUBSTRATE MATERIAL: ALUMINUM

2. FINISH (EXCEPT SURACES S1):  
BLACK ANODIZED

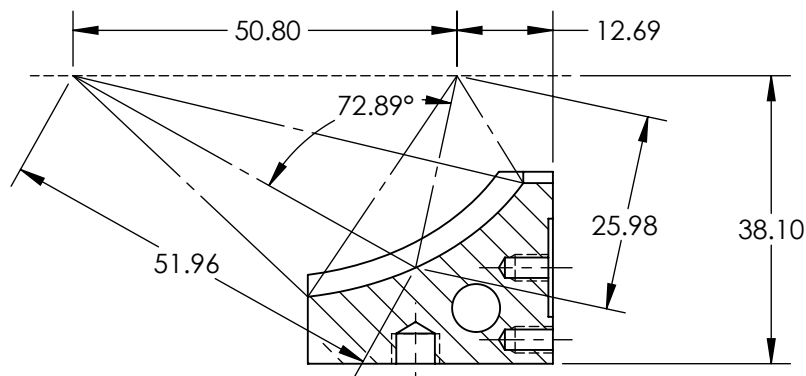
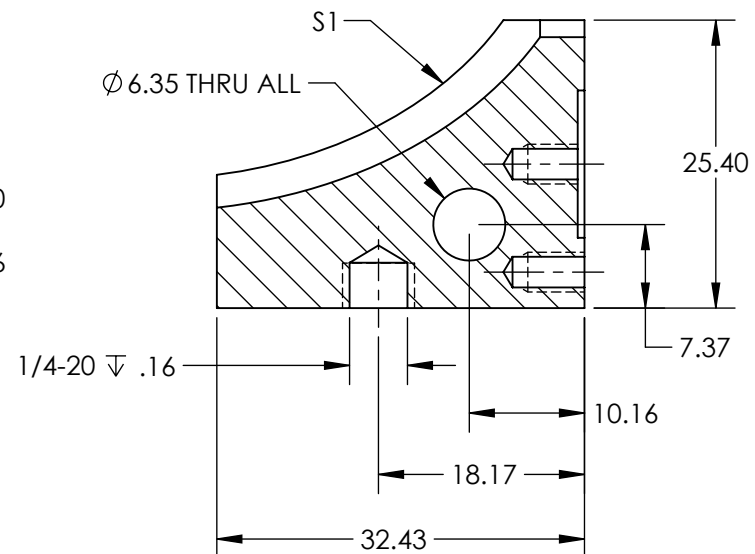
3. COATING (APPLY ACROSS CLEAR APERTURE)  
S1: PROTECTED ALUMINUM  
R(AVG) >85% @ 400 - 700nm @ 0° AOI  
R(AVG) >90% @ 400 - 2000nm @ 0° AOI

4. RoHS: COMPLIANT

Technical drawing of a square plate with four mounting holes. The plate has a width and height of 25.40. The mounting holes are arranged in a circle with a diameter of 19.05. The distance from the center of the plate to the center of each hole is 12.70. The holes have a diameter of 6.32 and a depth of .20. The plate has a thickness of .16. The drawing includes dimension lines and labels for the mounting holes and the bolt circle.



Dimensions and Labels:

- Plate Width: 25.40
- Plate Height: 25.40
- Distance from Center to Hole Center: 12.70
- Hole Diameter: 6-32 UNC  $\nabla$  .20
- Hole Depth: 2X  $\phi$  3.02  $\nabla$  .16
- Bolt Circle Diameter:  $\phi$  19.05 BOLT CIRCLE
- Angle between holes: 2X 120°



SECTION A-A

SPECIFICATIONS SUBJECT TO CHANGE WITHOUT NOTICE  
DIMENSIONS ARE FOR REFERENCE ONLY

	S1	S2	 Edmund Optics <sup>®</sup>				
SHAPE	CONCAVE	PLANO	<div>THIRD ANGLE PROJECTION</div> 				
SURFACE ROUGHNESS (Å)	< 100	< 100					
SURFACE QUALITY	60-40	60-40					
MIN CLEAR APERTURE (%)	90	80					
BEVEL MAX FACE	PROTECTIVE AS NEEDED	PROTECTIVE AS NEEDED	ALL DIMS IN	mm	DWG NO	12495	SHEET 1 OF 1
25.4mm Sq., 2X, Protected Aluminum Off-Axis Ellipsoidal Mirror							

