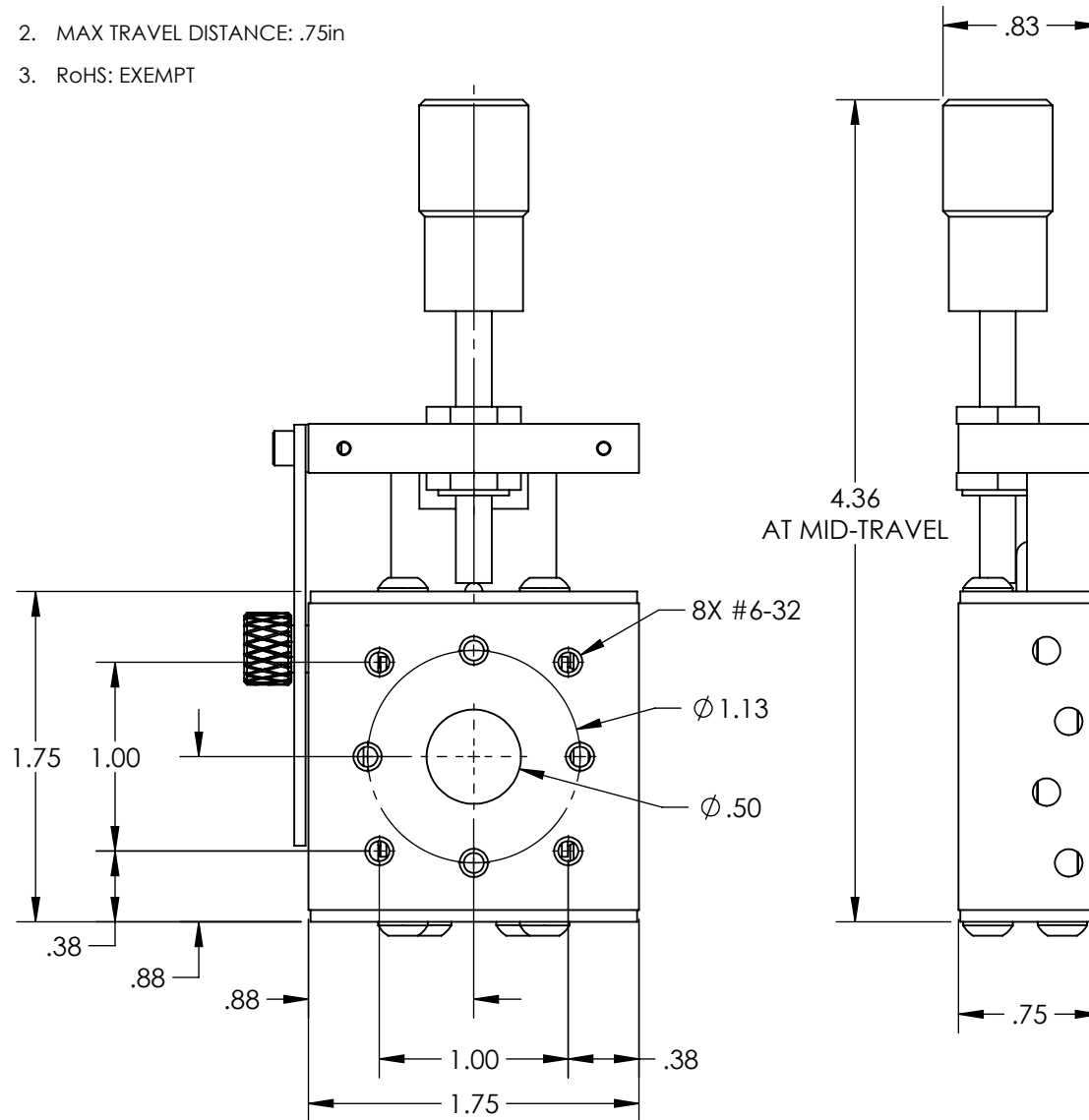
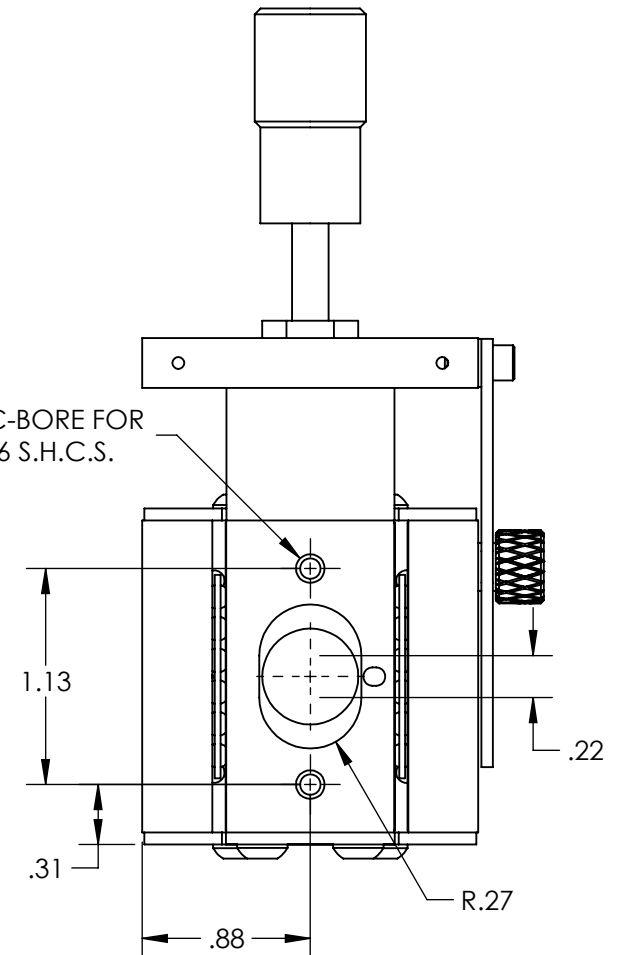


NOTES:

1. MATERIAL: STAINLESS STEEL AND BLACK ANODIZED ALUMINUM
2. MAX TRAVEL DISTANCE: .75in
3. RoHS: EXEMPT



2X C-BORE FOR  
#6 S.H.C.S.



**FOR INFORMATION ONLY:  
DO NOT MANUFACTURE  
PARTS TO THIS DRAWING**

SPECIFICATIONS SUBJECT TO  
CHANGE WITHOUT NOTICE  
DIMENSIONS ARE FOR  
REFERENCE ONLY

**Edmund Optics®**

THIRD ANGLE  
PROJECTION

TITLE

0.75" TRAVEL, FINE SCREW, THRU-HOLE BALL  
BEARING STAGE

ALL DIMS IN

in

DWG NO

36484

SHEET  
1 OF 1