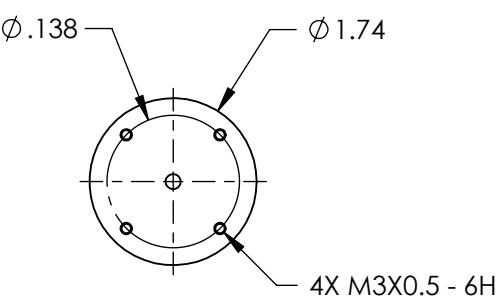
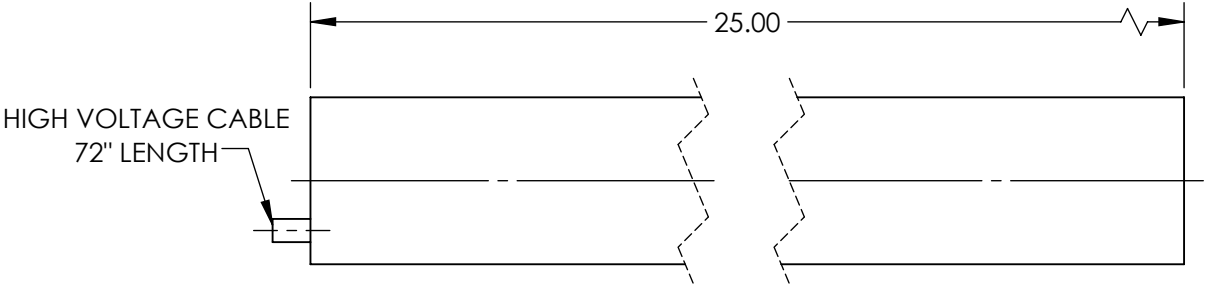


NOTES:  
1. RoHS: EXEMPT

**FOR INFORMATION ONLY:**  
**DO NOT MANUFACTURE**  
**PARTS TO THIS DRAWING**



	VALUE
WEIGHT (lbs)	2.6
WARM-UP TIME	20
RMS NOISE	30 Hz - 10 MHz: 0.5%
OPERATING TEMPERTURE (°C)	-40 to +70
OPERATING HUMIDITY	0 TO 100%, NON-CONDENSING
MODE PURITY (TEM00)	>95%
MINIMUM OUTPUT POWER, TEM00 (mW)	21
MAXIMUM DRIFT	MEAN POWER OVER 8 HRS: ±2
LONGITUDINAL MODE SPACING, NOMINAL (MHz)	257
LASER CLASS - CDRH	IIIb
COLOR	RED
POINTING STABILITY AFTER WARM UP (mrad/°C)	AFTER 15 MIN.: <0.3
POINTING STABILITY (mrad/°C)	FROM COLD START, 25°: <0.2
OUTPUT POWER (mW)	21
BEAM DIAMETER (mm)	0.7
BEAM DIVERGENCE (mrad)	1.15 ± 3
POLARIZATION	500:1
STATIC ALIGNMENT	CENTERED TO OUTER CYLINDER: ±0.01" PARALLEL TO OUTER CYLINDER: ±1.0 MRAD

SPECIFICATIONS SUBJECT TO CHANGE WITHOUT NOTICE  
DIMENSIONS ARE FOR REFERENCE ONLY

**EO**® **Edmund Optics**®

THIRD ANGLE PROJECTION		TITLE	Model 1145P, 21mW Linear Polarization, Lumentum HeNe Laser		
		DWG NO	62731	SHEET 1 OF 1	