

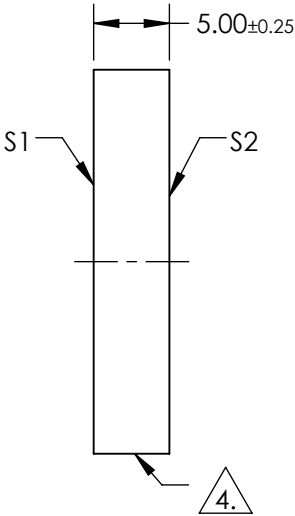
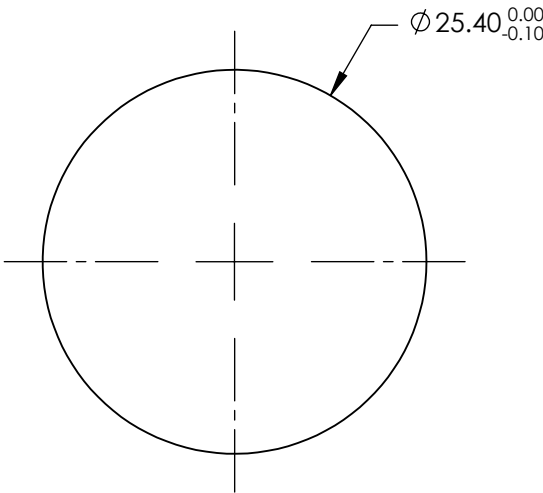
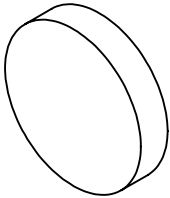
NOTES:

1. SUBSTRATE: FUSED SILICA
2. SURFACE S2 TO BE PARALLEL TO SURFACE S1 TO WITHIN < 3 ARCMIN
3. COATING (APPLY ACROSS COATING APERTURE)
S1: R(ABS) > 98.0% @ 266nm @ 45° AOI
R(ABS) > 98.0% @ 355nm @ 45° AOI
R(ABS) > 98.0% @ 532nm @ 45° AOI
R(ABS) > 97.0% @ 1064nm @ 45° AOI

S2: NONE

4. FINE GRIND SURFACE

5. RoHS: COMPLIANT



**FOR INFORMATION ONLY:
DO NOT MANUFACTURE
PARTS TO THIS DRAWING**

SPECIFICATIONS SUBJECT TO CHANGE WITHOUT NOTICE
DIMENSIONS ARE FOR REFERENCE ONLY

	S1	S2
SHAPE	PLANO	PLANO
SURFACE ACCURACY	$\lambda/8$	N/A
SURFACE QUALITY	20-10	COMMERCIAL POLISH
CLEAR APERTURE	Ø22.86	N/A
COATING APERTURE	Ø24.40	N/A
BEVEL	PROTECTIVE AS NEEDED	PROTECTIVE AS NEEDED



ALL DIMS IN

mm



Edmund Optics®

TITLE

MIRROR 25.4mm DIA. 5.0mm x 266, 355, 532,
1064nm

DWG NO

11613

SHEET
1 OF 1