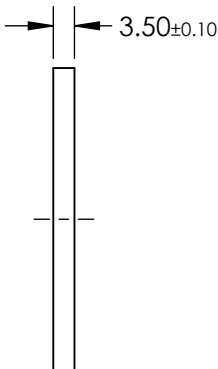
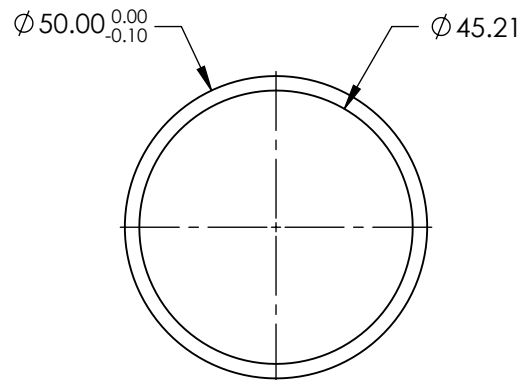
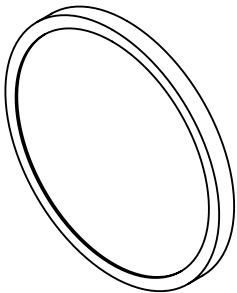


NOTES:

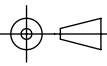
- 1. CONSTRUCTION: MOUNTED IN BLACK ANODIZED RING
- 2. COATING (APPLY ACROSS COATING APERTURE)
DURABILITY: MIL-C-48497A
PERFORMANCE SPECIFICATIONS:
CWL: 355
FWHM: 26 NOMINAL
REFLECTION %: >99.5
TRANSMISSION %: 280 - 300nm: Tavg >50; 300 - 700nm: Tavg >90
- 3. POWER, IRREGULARITY, AND SURFACE QUALITY SPECIFICATIONS
APPLY ACROSS CLEAR APERTURE
- 4. TRANSMITTED WAVEFRONT DISTORTION RMS@ <1λ
- 5. ROHS COMPLIANT



**FOR INFORMATION ONLY:
DO NOT MANUFACTURE
PARTS TO THIS DRAWING**

SPECIFICATIONS SUBJECT TO CHANGE WITHOUT NOTICE
DIMENSIONS ARE FOR REFERENCE ONLY

EO® **Edmund Optics®**

	S1	S2	THIRD ANGLE PROJECTION 				TITLE 355nm, 50mm Dia., OD 6 Blocking Notch Filter	
SHAPE	PLANO	PLANO						
SURFACE QUALITY	60-40	60-40	ALL DIMS IN		mm	DWG NO	39388	SHEET 1 OF 1
CLEAR APERTURE	Ø45.21	Ø45.21						