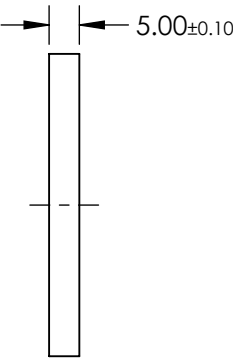
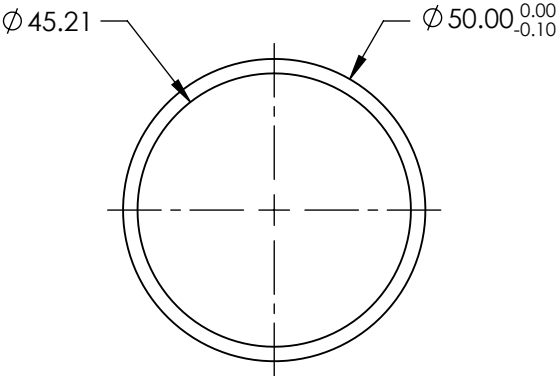
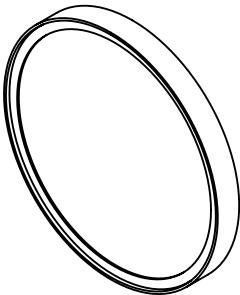


NOTES:

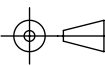
- 1. CONSTRUCTION: MOUNTED IN BLACK ANODIZED RING
- 2. COATING (APPLY ACROSS COATING APERTURE)
DURABILITY: MIL-C-48497A
PERFORMANCE SPECIFICATIONS:
CWL: 1030
FWHM: 51.5
REFLECTION %: >99
TRANSMISSION %: >90
- 3. POWER, IRREGULARITY, AND SURFACE QUALITY SPECIFICATIONS
APPLY ACROSS CLEAR APERTURE
- 4. TRANSMITTED WAVEFRONT DISTORTION RMS@ <1λ
- 5. ROHS COMPLIANT



**FOR INFORMATION ONLY:
DO NOT MANUFACTURE
PARTS TO THIS DRAWING**

SPECIFICATIONS SUBJECT TO CHANGE WITHOUT NOTICE
DIMENSIONS ARE FOR REFERENCE ONLY



	S1	S2	<div>THIRD ANGLE PROJECTION</div> 		TITLE	1030nm, 50mm DIAMETER, OD 4 NOTCH FILTER	
SHAPE	PLANO	PLANO					
SURFACE QUALITY	60-40	60-40	ALL DIMS IN	mm	DWG NO	39385	SHEET 1 OF 1
CLEAR APERTURE	Ø45.21	Ø45.21					