

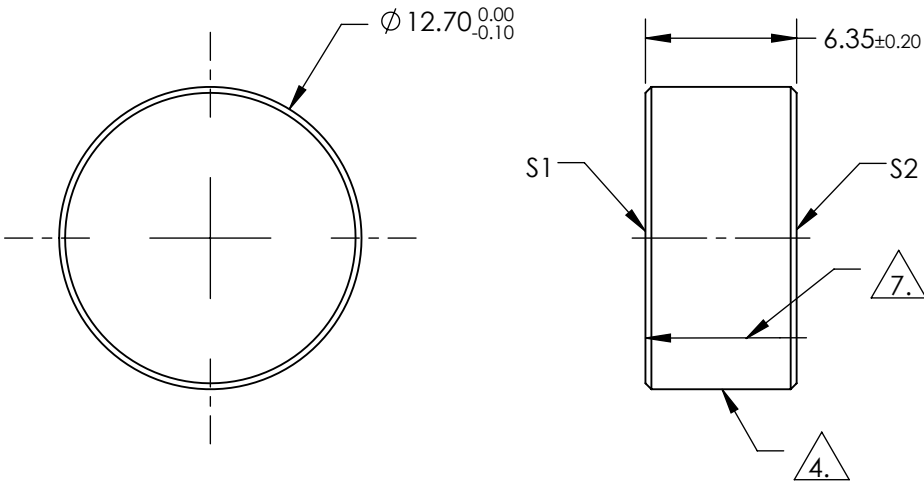
NOTES:

1. SUBSTRATE:
Fused Silica
2. SURFACE S1 TO BE PARALLEL TO SURFACE S2 TO WITHIN <3 ARCMINS
3. COATING (APPLY ACROSS COATING APERTURE)

S1: R(ABS) >99.8% @ 1030nm
DAMAGE THRESHOLD,
PULSED: 15 J/cm² @ 1030nm, 20ns, 20Hz


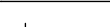
S2: NONE

4. FINE GROUND SURFACE
5. CLEAR APERTURE AND COATING APERTURE ARE CENTERED ON SURFACE
6. POWER, IRREGULARITY, AND SURFACE QUALITY SPECIFICATIONS APPLY ACROSS CLEAR APERTURE
7. ARROW ON EDGE WITH LASER ETCH, PENCIL, OR PERMANENT INK POINTS TOWARDS SURFACE S1



**FOR INFORMATION ONLY:
DO NOT MANUFACTURE
PARTS TO THIS DRAWING**

SPECIFICATIONS SUBJECT TO CHANGE WITHOUT NOTICE
DIMENSIONS ARE FOR REFERENCE ONLY

	S1	S2	<div><div> Edmund Optics®</div></div>				
SHAPE	PLANO	PLANO	<div><div>THIRD ANGLE PROJECTION</div><div></div></div>				
SURFACE QUALITY	10-5	COMMERCIAL POLISH					
SURFACE FLATNESS	0.10 WAVE	N/A	TITLE				
MIN CLEAR APERTURE	Ø11.43	N/A					
MIN COATING APERTURE	Ø11.43	N/A	12.7mm Dia. 1030nm 0-45°, Yb:YAG Laser Line Mirror				
BEVEL	PROTECTIVE AS NEEDED	PROTECTIVE AS NEEDED					
			ALL DIMS IN	mm	DWG NO	11304	SHEET 1 OF 1