

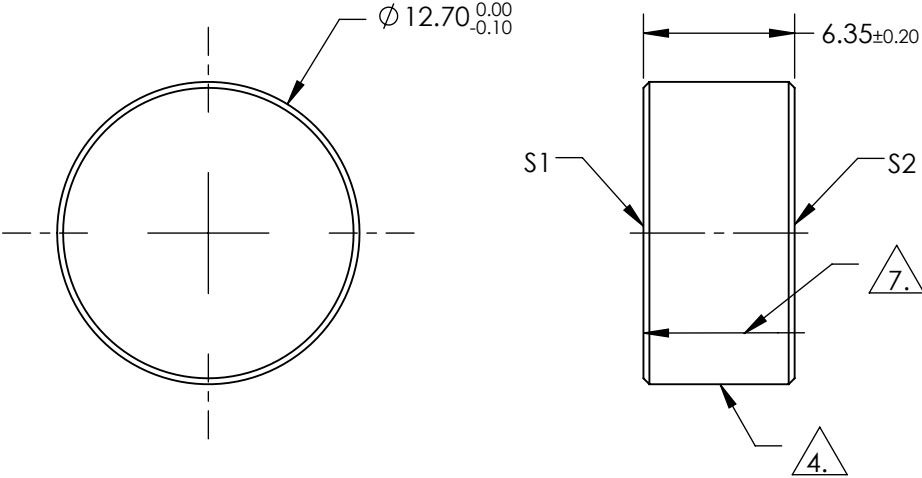
NOTES:

1. SUBSTRATE:  
Fused Silica
2. SURFACE S1 TO BE PARALLEL TO SURFACE S2 TO WITHIN <3 ARCMINS
3. COATING (APPLY ACROSS COATING APERTURE)

S1: R(ABS) >99.8% @ 1030nm  
DAMAGE THRESHOLD,  
PULSED: 20 J/cm² @ 1030nm, 20ns, 20Hz  
CW: 1 MW/cm² @ 1030nm

S2: NONE

4. FINE GROUND SURFACE
5. CLEAR APERTURE AND COATING APERTURE ARE CENTERED ON SURFACE
6. POWER, IRREGULARITY, AND SURFACE QUALITY SPECIFICATIONS APPLY ACROSS CLEAR APERTURE
7. ARROW ON EDGE WITH LASER ETCH, PENCIL, OR PERMANENT INK POINTS TOWARDS SURFACE S1



**FOR INFORMATION ONLY:  
DO NOT MANUFACTURE  
PARTS TO THIS DRAWING**

SPECIFICATIONS SUBJECT TO CHANGE WITHOUT NOTICE  
DIMENSIONS ARE FOR REFERENCE ONLY

	S1	S2				
SHAPE	PLANO	PLANO	<div><div>THIRD ANGLE PROJECTION</div><div></div></div> <div>Edmund Optics®</div> <div>TITLE12.7mm Dia. 1030nm 45°, Yb:YAG Laser Line Mirror</div> <div>DWG NO11292</div> <div>SHEET1 OF 1</div>			
SURFACE QUALITY	10-5	COMMERCIAL POLISH				
SURFACE FLATNESS	0.10 WAVE	N/A				
MIN CLEAR APERTURE	Ø11.43	N/A				
MIN COATING APERTURE	Ø11.43	N/A				
BEVEL	PROTECTIVE AS NEEDED	PROTECTIVE AS NEEDED	ALL DIMS IN	mm		