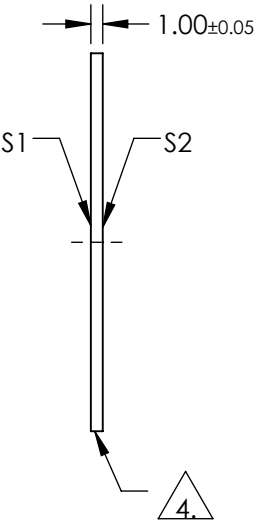
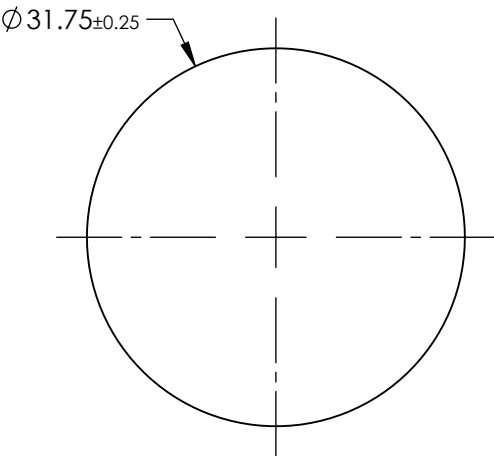
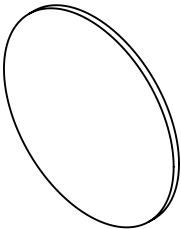


NOTES:

- 1. SUBSTRATE: OPTICAL GRADE SAPPHIRE (Al<sub>2</sub>O<sub>3</sub>)
- 2. SURFACE S2 TO BE PARALLEL TO SURFACE S1 TO WITHIN <3.5 ARCMIN
- 3. COATING (APPLY ACROSS COATING APERTURE):  
S1 & S2: R(AVG) ≤ 0.5% from 600 - 1050nm

4. GRIND SURFACE

5. RoHS: COMPLIANT



**FOR INFORMATION ONLY:  
DO NOT MANUFACTURE  
PARTS TO THIS DRAWING**

SPECIFICATIONS SUBJECT TO CHANGE WITHOUT NOTICE  
DIMENSIONS ARE FOR REFERENCE ONLY

	S1	S2
SHAPE	PLANO	PLANO
SURFACE QUALITY	80-50	80-50
SURFACE FLATNESS @ 632.8nm	2λ	2λ
SURFACE ROUGHNESS (μm/in)	0.1	0.1
BIREFRINGENCE	0.008	0.008
CLEAR APERTURE	Ø28.58	Ø28.58
BEVEL	PROTECTIVE AS NEEDED	PROTECTIVE AS NEEDED

THIRD ANGLE PROJECTION

ALL DIMS IN mm

 **Edmund Optics®**

TITLE	Window Saph 31.75 Dia NIR I Ctd		
DWG NO	39257	SHEET	1 OF 1