

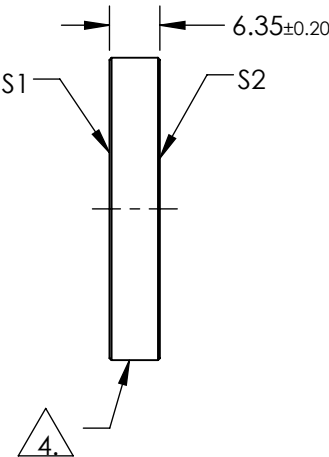
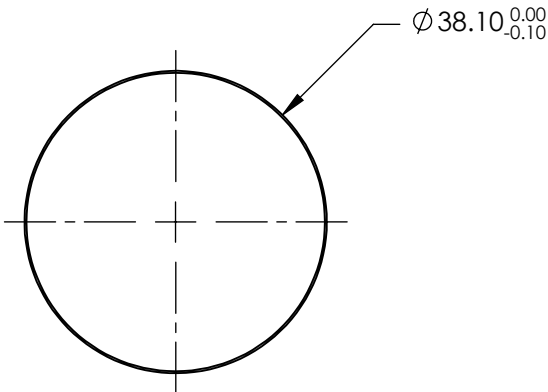
NOTES:

1. SUBSTRATE:  
N-BK7
2. S2 TO BE PARALLEL TO S1 TO WITHIN <3 ARCMINS
3. COATING (APPLY ACROSS COATING APERTURE)  
S1 & S2: R(ABS) < 0.25% @ 532nm @ 0° AOI

DAMAGE THRESHOLD  
PULSED: 10J/cm² @ 20ns, 20Hz @ 532nm

4. FINE GROUND SURFACE


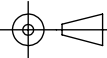
5. CLEAR APERTURE AND COATING APERTURE ARE CENTERED ON SURFACE
6. SURFACE QUALITY SPECIFICATIONS APPLY ACROSS CLEAR APERTURE
7. ROHS COMPLIANT



**FOR INFORMATION ONLY:  
DO NOT MANUFACTURE  
PARTS TO THIS DRAWING**

SPECIFICATIONS SUBJECT TO CHANGE WITHOUT NOTICE  
DIMENSIONS ARE FOR REFERENCE ONLY

	S1	S2
SHAPE	PLANO	PLANO
SURFACE QUALITY	10-5	10-5
SURFACE FLATNESS	$\lambda/10$	$\lambda/10$
MIN CLEAR APERTURE	$\text{Ø}34.29$	$\text{Ø}34.29$
BEVEL	PROTECTIVE AS NEEDED	PROTECTIVE AS NEEDED

 Edmund Optics®			
THIRD ANGLE PROJECTION 		TITLE	Ø38.1mm x 6.35mm 532nm N-BK7 LASER WINDOW
ALL DIMS IN	mm	DWG NO	11452
			SHEET 1 OF 1