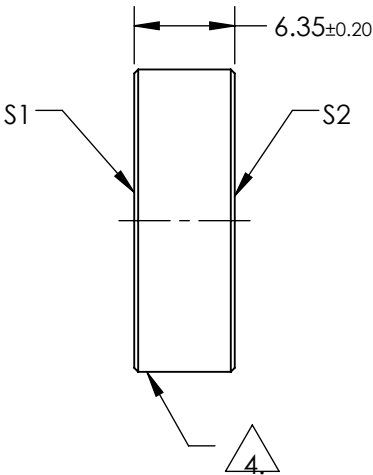
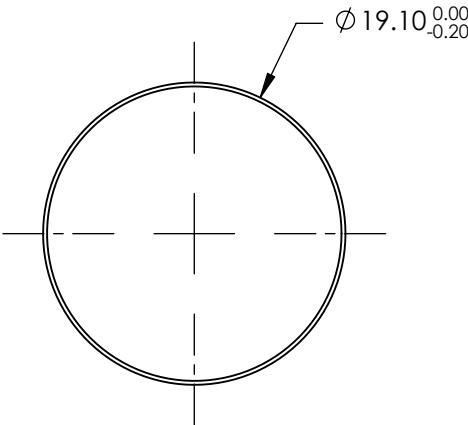


NOTES:

1. SUBSTRATE:  
FUSED SILICA
2. S2 TO BE PARALLEL TO S1 TO WITHIN <3ARCMIN
3. COATING (APPLY ACROSS COATING APERTURE)  
S1: BROADBAND  
R(AVG) >98% from 400 - 750nm @ 0 - 45 deg AOI For All Polarizations  
R(AVG) >99% from 400-750nm @ 0 - 45 deg AOI For S-Polarization  
  
DAMAGE THRESHOLD,  
PULSED: 0.5J/cm², 20ns , 20Hz @ 532nm  
  
S2: NONE

4. FINE GROUND SURFACE

5. CLEAR APERTURE AND COATING APERTURE ARE CENTERED ON SURFACE
6. SURFACE QUALITY SPECIFICATIONS APPLY ACROSS CLEAR APERTURE
7. ROHS: COMPLIANT




**FOR INFORMATION ONLY:  
DO NOT MANUFACTURE  
PARTS TO THIS DRAWING**

SPECIFICATIONS SUBJECT TO CHANGE WITHOUT NOTICE  
DIMENSIONS ARE FOR REFERENCE ONLY

	S1	S2
SHAPE	PLANO	PLANO
SURFACE QUALITY	20-10	COMMERCIAL POLISH
SURFACE FLATNESS	0.10 WAVE	N/A
CLEAR APERTURE	Ø17.19	N/A
COATING APERTURE	Ø18.10	N/A
BEVEL	PROTECTIVE AS NEEDED	PROTECTIVE AS NEEDED

THIRD ANGLE PROJECTION	
ALL DIMS IN	mm

 Edmund Optics®			
TITLE		MIRROR BROADBAND 400-750nm 19.1mm DIA	
DWG NO		39205	SHEET 1 OF 1