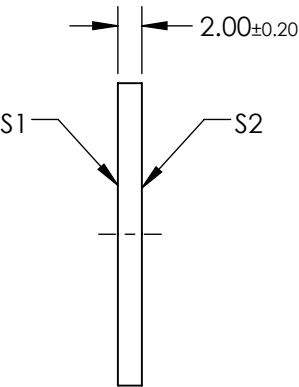
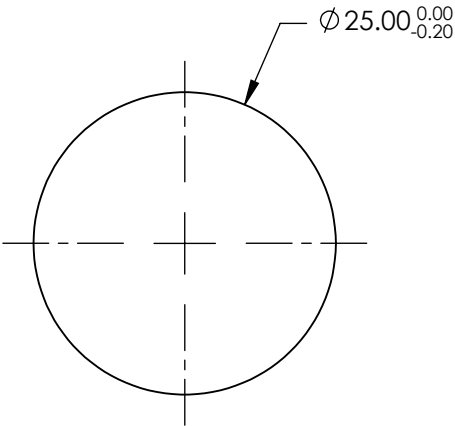


NOTES:

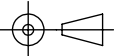
- 1. SUBSTRATE:
B270
- 2. SURFACE S2 TO BE PARALLEL TO SURFACE S1 TO WITHIN <3 ARCMIN
- 3. COATING (APPLY ACROSS COATING APERTURE)
S1 & S2: R(AVG) < 0.5% @ 400 - 700nm
- 4. RETARDANCE: $\lambda/4 \pm 10\text{nm}$ @ 633nm
- 5. DESIGN WAVELENGTH: 633nm
- 6. CONSTRUCTION: Birefringent Polymer Stack
- 7. ROHS: COMPLIANT



SPECIFICATIONS SUBJECT TO CHANGE WITHOUT NOTICE
DIMENSIONS ARE FOR REFERENCE ONLY

**FOR INFORMATION ONLY:
DO NOT MANUFACTURE
PARTS TO THIS DRAWING**

EO[®] Edmund Optics[®]

THIRD ANGLE PROJECTION 		TITLE	633nm, $\lambda/4$ Polymer Waveplate	
ALL DIMS IN	mm	DWG NO	90941	SHEET 1 OF 1