

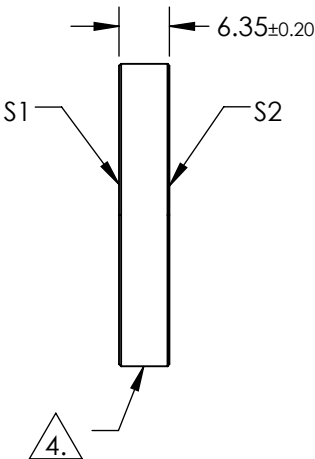
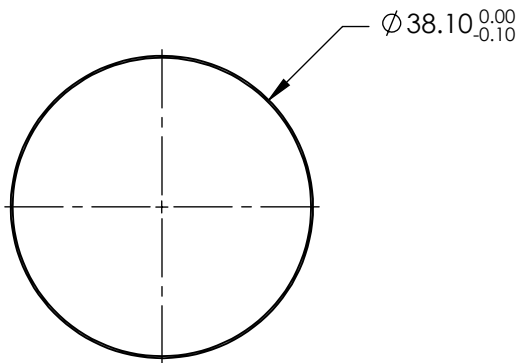
NOTES:

1. SUBSTRATE:  
FUSED SILICA
2. S2 TO BE PARALLEL TO S1 TO WITHIN <3 ARCMINS
3. COATING (APPLY ACROSS COATING APERTURE)  
S1 & S2: R(ABS) < 0.25% @ 532nm @ 0° AOI

DAMAGE THRESHOLD  
PULSED: 10J/cm² @ 20ns, 20Hz @ 532nm


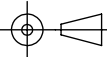
4. FINE GROUND SURFACE

5. CLEAR APERTURE AND COATING APERTURE ARE CENTERED ON SURFACE
6. POWER, IRREGULARITY, AND SURFACE QUALITY SPECIFICATIONS APPLY  
ACROSS CLEAR APERTURE
7. ROHS COMPLIANT



**FOR INFORMATION ONLY:  
DO NOT MANUFACTURE  
PARTS TO THIS DRAWING**

SPECIFICATIONS SUBJECT TO CHANGE WITHOUT NOTICE  
DIMENSIONS ARE FOR REFERENCE ONLY

	S1	S2	 Edmund Optics®			
SHAPE	PLANO	PLANO				
SURFACE QUALITY	10-5	10-5		TITLE		
SURFACE FLATNESS	λ/10	λ/10		Ø38.1mm x 6.35mm 532nm FS LASER WINDOW		
MIN CLEAR APERTURE	Ø34.29	Ø34.29		DWG NO		
BEVEL	PROTECTIVE AS NEEDED	PROTECTIVE AS NEEDED		38973		
			ALL DIMS IN	mm	SHEET 1 OF 1	