

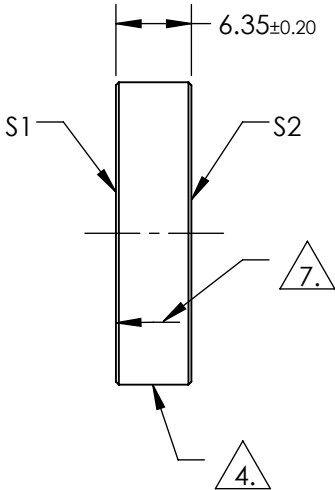
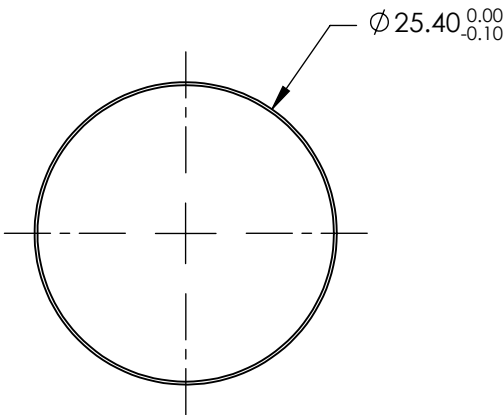
NOTES:

1. SUBSTRATE:
N-BK7
2. SURFACE S1 TO BE PARALLEL TO SURFACE S2 TO WITHIN <3 ARCMINS
3. COATING (APPLY ACROSS COATING APERTURE)

S1: R(ABS) ≥ 99% @ 532nm
DAMAGE THRESHOLD,
PULSED: 3 J/cm², 20ns, 20 Hz @ 532nm

S2: NONE

4. FINE GROUND SURFACE
5. CLEAR APERTURE AND COATING APERTURE ARE CENTERED ON SURFACE
6. POWER, IRREGULARITY, AND SURFACE QUALITY SPECIFICATIONS APPLY ACROSS CLEAR APERTURE
7. APPLY ARROW ON EDGE WITH LASER ETCH, PENCIL, OR PERMANENT INK POINTING TOWARDS SURFACE S1



**FOR INFORMATION ONLY:
DO NOT MANUFACTURE
PARTS TO THIS DRAWING**

SPECIFICATIONS SUBJECT TO CHANGE WITHOUT NOTICE
DIMENSIONS ARE FOR REFERENCE ONLY

	S1	S2				
SHAPE	PLANO	PLANO	<div><div>THIRD ANGLE PROJECTION</div><div></div><div>TITLE</div><div>Ø25.4mm, 532nm N-BK7 LASER LINE MIRROR</div></div>			
SURFACE QUALITY	20-10	COMMERCIAL POLISH				
SURFACE FLATNESS	0.10 WAVE	N/A				
MIN CLEAR APERTURE	Ø22.86	N/A				
MIN COATING APERTURE	Ø22.86	N/A				
BEVEL	PROTECTIVE AS NEEDED	PROTECTIVE AS NEEDED	ALL DIMS IN	mm	DWG NO	38619
					Edmund Optics®	
					SHEET 1 OF 1	