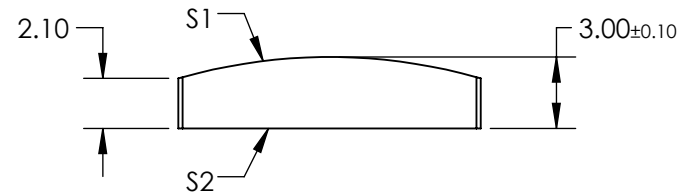
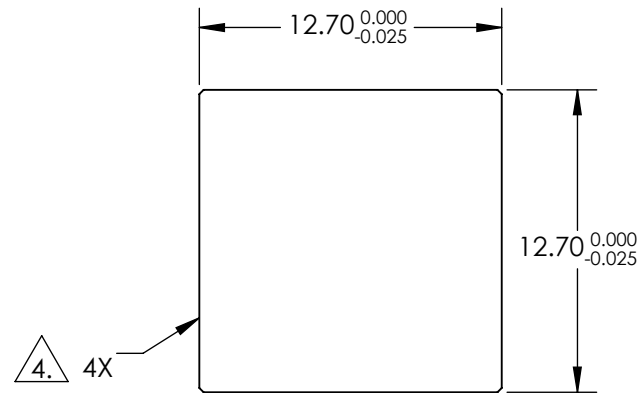
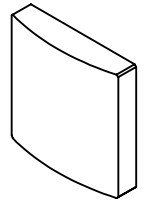


NOTES:

1. SUBSTRATE
UV GRADE FUSED SILICA
2. CENTERING TOLERANCE:
PLANO AXIS WEDGE: <3 ARCMIN
POWER AXIS WEDGE: <4.5 ARCMIN
AXIAL TWIST: <3 ARCMIN
3. COATING (APPLY ACROSS COATING APERTURE)
S1 & S2: 1064nm AR Coated
R(ABS) < 0.25% @ 1064nm @ 0° AOI


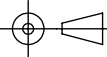
DAMAGE THRESHOLD
PULSED: 15 J/cm², 20ns, 20 Hz @ 1064 nm
4. FINE GROUND SURFACE
5. RoHS COMPLIANT



**FOR INFORMATION ONLY:
DO NOT MANUFACTURE
PARTS TO THIS DRAWING**

	S1	S2
SHAPE	CONVEX	PLANO
RADIUS	22.93	INFINITY
SURFACE QUALITY	20 - 10	20 - 10
CLEAR APERTURE	11.43 x 11.43	11.43 x 11.43
COATING APERTURE	11.70 x 11.70	11.70 x 11.70
POWER AT 632.8nm	1.50 WAVES	1.50 WAVES
IRREGULARITY AT 632.8nm	0.25 WAVES	0.25 WAVES
BEVEL	PROTECTIVE AS NEEDED	PROTECTIVE AS NEEDED

SPECIFICATIONS SUBJECT TO CHANGE WITHOUT NOTICE
DIMENSIONS ARE FOR REFERENCE ONLY

EFL	50.00	 Edmund Optics®	
BFL	47.95		
THIRD ANGLE PROJECTION		TITLE	BEAM SHAPING CYLINDER LENS, FUSED SILICA, 12.7 SQ X 50mm EFL, AR COATED
ALL DIMS IN	mm	DWG NO	37605
			SHEET 1 OF 1