

NOTES:

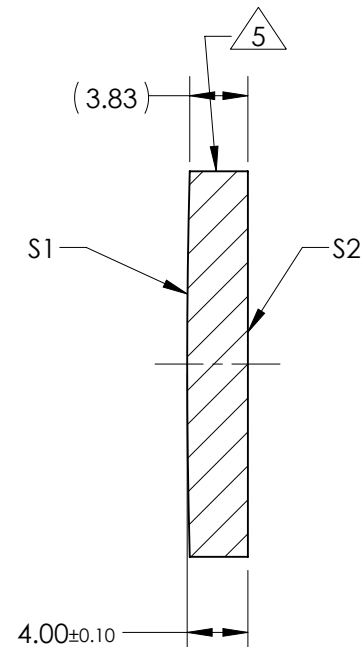
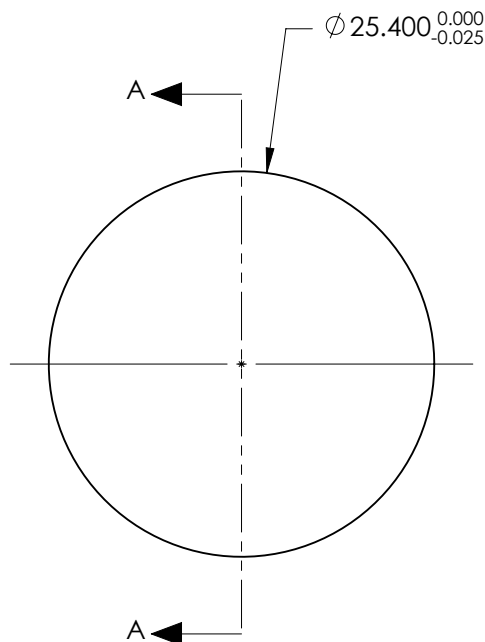
1. SUBSTRATE:
CORNING: FUSED SILICA 458/678
2. ROHS COMPLIANT
3. CENTERING TOLERANCE (AT 587.6nm):
BEAM DEVIATION (HALF ANGLE): <1 ARCMIN
4. COATING (APPLY ACROSS COATING APERTURE)

S1 & S2: 266nm Laser AR Coating
R(ABS) < 0.25% @ 266nm @ 0° AOI

DAMAGE THRESHOLD
PULSED: 3J/cm² @ 20ns, 20Hz @ 266nm

5. FINE GRIND SURFACE

6. POWER, IRREGULARITY, AND SURFACE QUALITY SPECIFICATIONS APPLY ACROSS CLEAR APERTURE
7. FOCAL LENGTH (EFL): 1000.00mm ±1%
BACK FOCAL LENGTH (BFL): 997.59mm
8. PROTECTIVE BEVEL AS NEEDED
9. DESIGN WAVELENGTH: 355nm



SECTION A-A

FOR INFORMATION ONLY:
DO NOT MANUFACTURE
PARTS TO THIS DRAWING

| | S1 | S2 |
|-------------------------|-----------|-----------|
| SHAPE | CONVEX | PLANO |
| RADIUS | 476.09 | INFINITY |
| SURFACE QUALITY | 10 - 5 | 10 - 5 |
| MIN CLEAR APERTURE | Ø 21.59 | Ø 21.59 |
| MIN COATING APERTURE | Ø 21.59 | Ø 21.59 |
| POWER AT 632.8nm | 2.0 RINGS | 2.0 RINGS |
| IRREGULARITY AT 632.8nm | 0.2 RINGS | 0.2 RINGS |

SPECIFICATIONS SUBJECT TO CHANGE WITHOUT NOTICE
DIMENSIONS ARE FOR REFERENCE ONLY

EO® **Edmund Optics**®



ALL DIMS IN mm

| | | | |
|--------|---|-------|--------|
| TITLE | 25.4mm Dia x 1000mm EFL, 266nm Coated, Laser Grade PCX Lens | | |
| DWG NO | 38655 | SHEET | 1 OF 1 |