

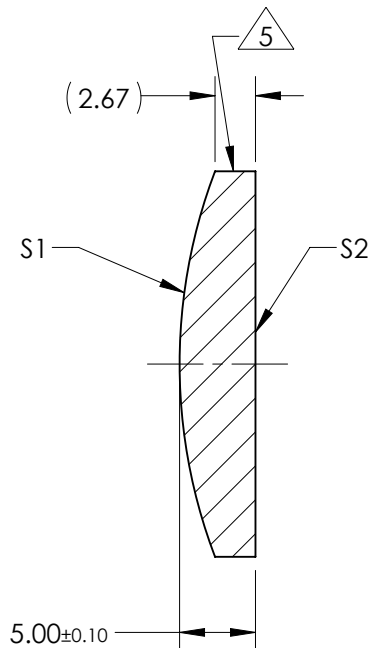
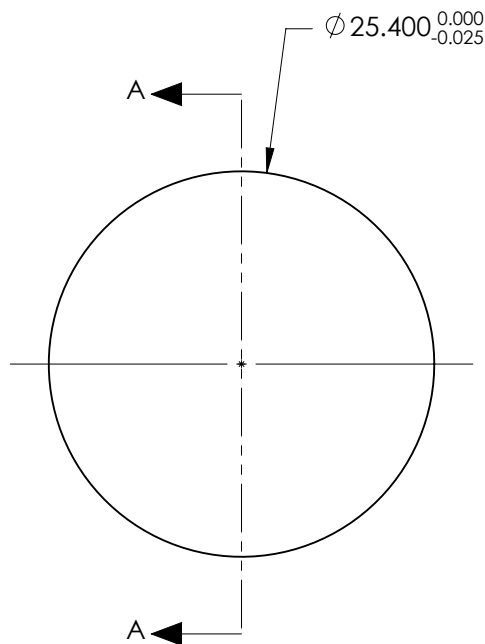
NOTES:

- SUBSTRATE:
CORNING: FUSED SILICA 458/678
- ROHS COMPLIANT
- CENTERING TOLERANCE (AT 587.6nm):
BEAM DEVIATION (HALF ANGLE): <1 ARCMIN
- COATING (APPLY ACROSS COATING APERTURE)

S1: NONE
S2: NONE

5. FINE GRIND SURFACE

- POWER, IRREGULARITY, AND SURFACE QUALITY SPECIFICATIONS APPLY ACROSS CLEAR APERTURE
- FOCAL LENGTH (EFL): 75.00mm \pm 1%
BACK FOCAL LENGTH (BFL): 71.63mm
- PROTECTIVE BEVEL AS NEEDED
- DESIGN WAVELENGTH: 355nm



SECTION A-A

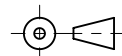
***FOR INFORMATION ONLY:
DO NOT MANUFACTURE
PARTS TO THIS DRAWING***

	S1	S2
SHAPE	CONVEX	PLANO
RADIUS	35.71	INFINITY
SURFACE QUALITY	10 - 5	10 - 5
MIN CLEAR APERTURE	ϕ 21.59	ϕ 21.59
MIN COATING APERTURE	N/A	N/A
POWER AT 632.8nm	2.0 RINGS	2.0 RINGS
IRREGULARITY AT 632.8nm	0.2 RINGS	0.2 RINGS

SPECIFICATIONS SUBJECT TO CHANGE WITHOUT NOTICE
DIMENSIONS ARE FOR REFERENCE ONLY

EO® **Edmund Optics**®

THIRD ANGLE PROJECTION



ALL DIMS IN mm

TITLE 25.4mm Dia x 75mm EFL, Uncoated, Laser Grade PCX Lens

DWG NO 38626

SHEET 1 OF 1