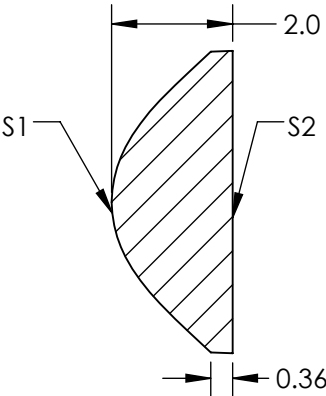
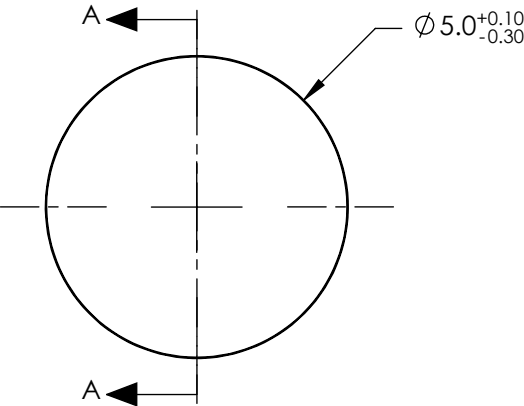


NOTES:

- 1. SUBSTRATE:
LIBA2000+
- 2. NUMERICAL APERTURE: 0.71
- 3. COATING
S1 & S2: NONE
- 4. FOCAL LENGTH TOLERANCE: ±7%
- 5. RoHS COMPLIANT



SECTION A-A

**FOR INFORMATION ONLY:
DO NOT MANUFACTURE
PARTS TO THIS DRAWING**

SPECIFICATIONS SUBJECT TO CHANGE WITHOUT NOTICE
DIMENSIONS ARE FOR REFERENCE ONLY

	S1	S2
SHAPE	CONVEX	PLANO
SURFACE QUALITY	As Molded	As Molded
CLEAR APERTURE	4.0	4.0
BEVEL MAX	PROTECTIVE AS NEEDED	PROTECTIVE AS NEEDED

EFL	3.7
BFL	2.40
THIRD ANGLE PROJECTION	
ALL DIMS IN	mm

TITLE	5mm DIA. X 3.7mm FL, UNCOATED MOLDED ASPHERIC CONDENSER LENS		
DWG NO	88282	SHEET 1 OF 1	