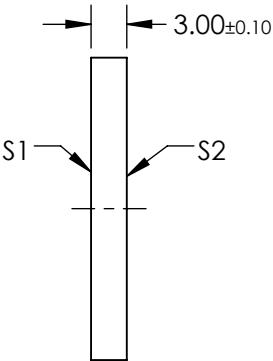
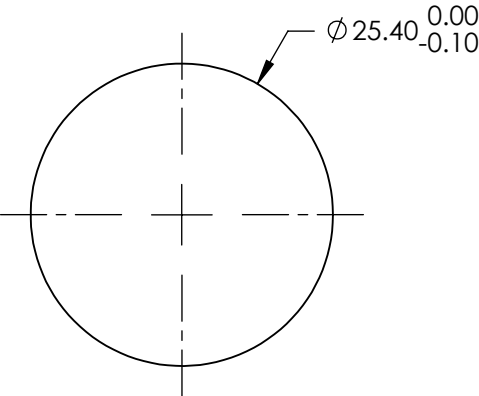
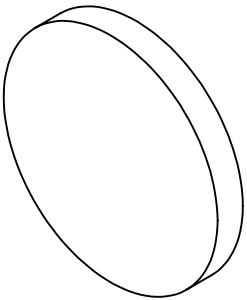



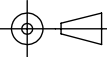
NOTES:

- 1. SUBSTRATE: FUSED SILICA
- 2. RoHS: COMPLIANT
- 3. EXTINCTION RATIO: 60
- 4. SURFACE S2 TO BE PARALLEL TO SURFACE S1 TO WITHIN <30 arcsec
- 5. ANGLE OF INCIDENCE: 72°
- 6. WAVELENGTH RANGE: 750 - 850nm
- 7. DAMAGE THRESHOLD,  
PULSED: TYPICAL: 5 J/cm² @ 1064nm, 10ns  
CONTRAST: Rs:Rp >60:1  
TRANSMISSION (%): -



**FOR INFORMATION ONLY:  
DO NOT MANUFACTURE  
PARTS TO THIS DRAWING**

SPECIFICATIONS SUBJECT TO CHANGE WITHOUT NOTICE  
DIMENSIONS ARE FOR REFERENCE ONLY

|                  | S1    | S2    |  Edmund Optics® |        |   |              |
|------------------|-------|-------|--|--------|---|--------------|
| SHAPE            | PLANO | PLANO |                 | TITLE  | 25.4mm Dia, Reflection, Ultrafast Polarizer 750 - 850nm |              |
| SURFACE QUALITY  | 20-10 | 20-10 |  | DWG NO | 88236   |              |
| CLEAR APERTURE   | 22.86 | 22.86 |  |        |   |              |
| SURFACE FLATNESS | λ/6   | λ/6   | ALL DIMS IN  | mm     |   | SHEET 1 OF 1 |