

NOTES:

1. SUBSTRATE: BOROFLOAT®

2. PARABOLIC SURFACE:  
 $Z=Y^2/[4 * EFL]$

3. COATING (APPLY ACROSS COATING APERTURE)  
PROTECTED ALUMINUM (400 - 2000nm)

S1: Ravg >85% @ 400 - 700nm  
Ravg >90% @ 400 - 2000nm  
S2: NONE

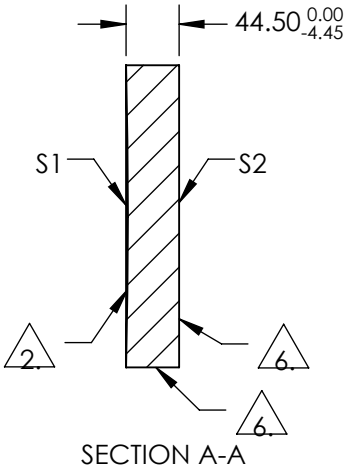
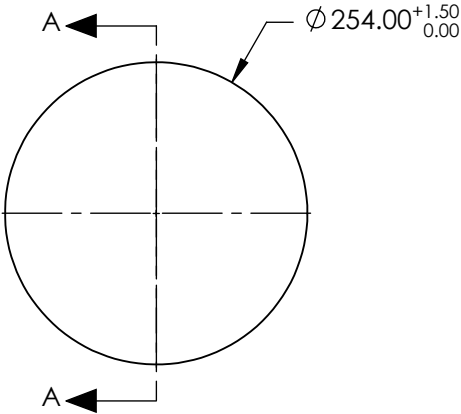
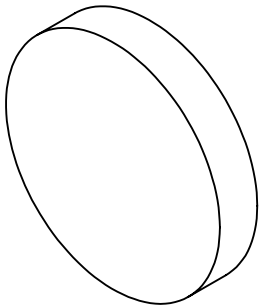
4. EDGES: MOLDED EDGE ACCEPTABLE

5. POWER, IREGULARITY, SURFACE QUALITY AND COATING  
SPECIFICATIONS APPLY ACROSS CLEAR APERTURE

6. FINE GRIND SURFACE

7. RoHS: COMPLIANT

**FOR INFORMATION ONLY:  
DO NOT MANUFACTURE  
PARTS TO THIS DRAWING**



	S1	S2
SHAPE	CONCAVE	PLANO
CLEAR APERTURE	Ø229.0	N/A
EFFECTIVE FOCAL LENGTH	2540.0	N/A
FOCAL LENGTH TOLERANCE	±1.5%	N/A
SURFACE QUALITY	60-40	FINE GRIND
SURFACE FLATNESS	λ/8	N/A
BEVEL	PROTECTIVE AS NEEDED	PROTECTIVE AS NEEDED

SPECIFICATIONS SUBJECT TO CHANGE WITHOUT NOTICE  
DIMENSIONS ARE FOR REFERENCE ONLY

**Edmund Optics®**



ALL DIMS IN

mm

TITLE

10 IN F10 1/8W PARAB PRO AL

DWG NO

35726522

SHEET  
1 OF 1