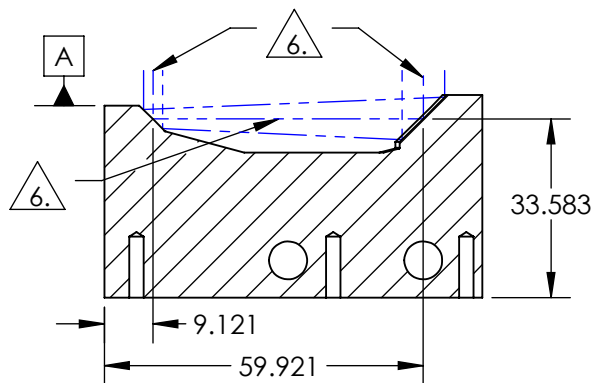
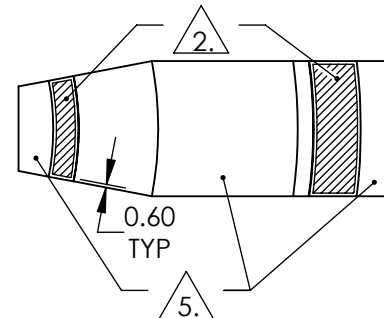
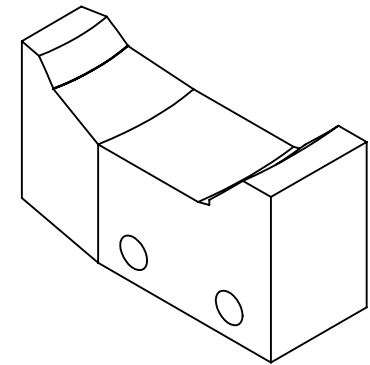
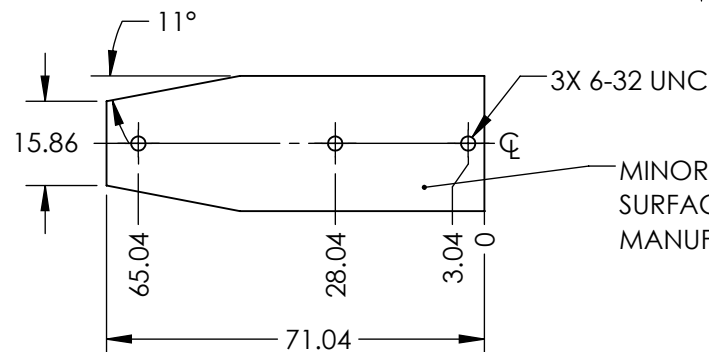
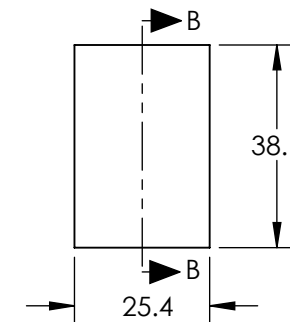
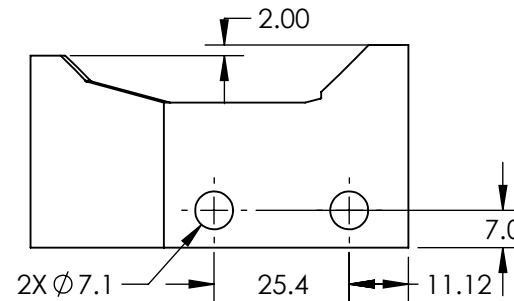


NOTES:

1. SUBSTRATE: ALUMINUM 6061-T6
2. COATING
PROTECTED ALUMINUM
 $R(AVG) > 85\%$ FROM 400-700nm
 $R(AVG) > 90\%$ FROM 400-2,000nm
3. SURFACE ROUGHNESS: $<50 \text{ \AA RMS}$
4. SYSTEM SHALL BE ALIGNED TO DATUM **A** WITH
REFLECTED WAVEFRONT ERROR OF $\leq 1/10$ WAVE
AT 632.8 nm FOR $\varnothing 1\text{mm}$ INPUT BEAM.
5. INTEGRATED ALIGNMENT FLATS
6. OPTICAL CENTER LINE
7. RoHS COMPLIANT



SECTION B-B
OPTICAL CENTER LINE



MINOR SCRATCHES ON THE NON-OPTICAL
SURFACE MIGHT BE PRESENT DUE TO THE
MANUFACTURING PROCESS.

**FOR INFORMATION ONLY:
DO NOT MANUFACTURE
PARTS TO THIS DRAWING**

SPECIFICATIONS SUBJECT TO
CHANGE WITHOUT NOTICE
DIMENSIONS ARE FOR
REFERENCE ONLY

EO® Edmund Optics®

REV. A	S1
SHAPE	MONOLITHIC
BEVEL	PROTECTIVE AS NEEDED

THIRD ANGLE PROJECTION		TITLE	2X, Protected Aluminum Canopus™ Reflective Beam Expander	
		DWG NO	37193	SHEET 1 OF 1