

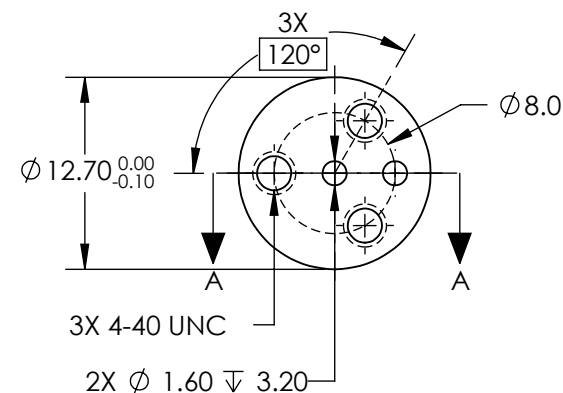
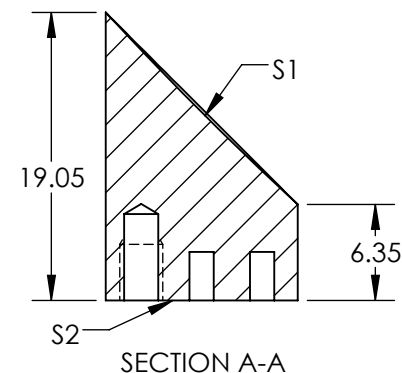
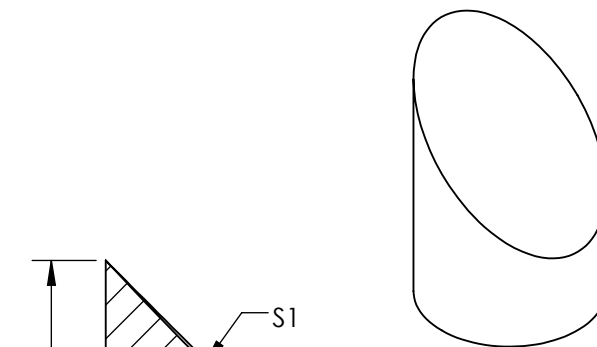
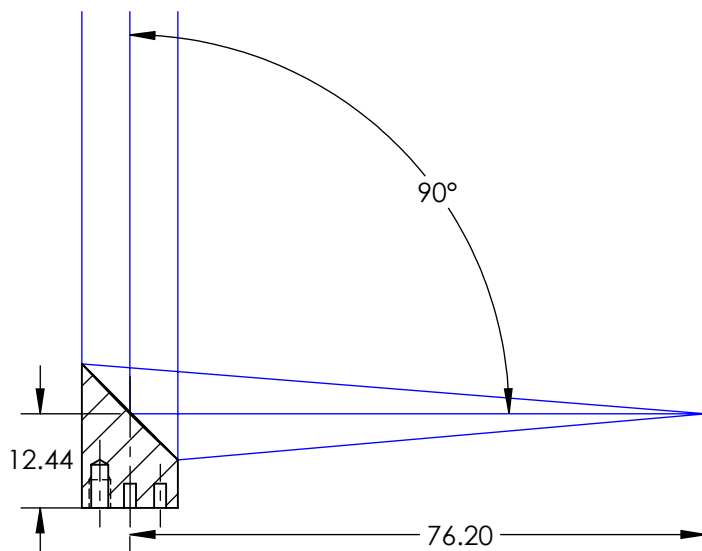
NOTES:

1. SUBSTRATE MATERIAL:
ALUMINUM
2. FINISH (EXCEPT SURFACE S1 & S2):
BLACK ANODIZED
3. COATING (APPLY ACROSS CLEAR APERTURE)
S1: UV ENHANCED ALUMINUM
R(AVG) >89% FROM 250 - 450nm
R(AVG) >85% FROM 250 - 700nm

SURFACE ROUGHNESS: <50 Å RMS

4. FOCAL LENGTH TOLERANCE: ±1%
5. ROHS COMPLIANT

**FOR INFORMATION ONLY:
DO NOT MANUFACTURE
PARTS TO THIS DRAWING**



SPECIFICATIONS SUBJECT TO CHANGE WITHOUT NOTICE
DIMENSIONS ARE FOR REFERENCE ONLY

| | |
|---------------------------------|----------------------|
| REV. A | S1 |
| SHAPE | PARABOLIC |
| SURFACE FIGURE AT 632.8nm (RMS) | λ/8 |
| CLEAR APERTURE | 90% |
| BEVEL | PROTECTIVE AS NEEDED |



ALL DIMS IN

mm

Edmund Optics®

TITLE

Ø12.7 X 76.2mm EFL, UV ENHANCED
ALUMINUM 50Å OFF-AXIS PARABOLIC MIRROR

DWG NO

37267

SHEET
1 OF 1