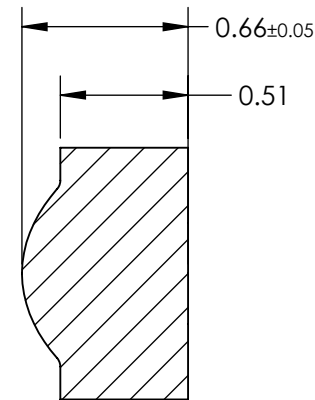
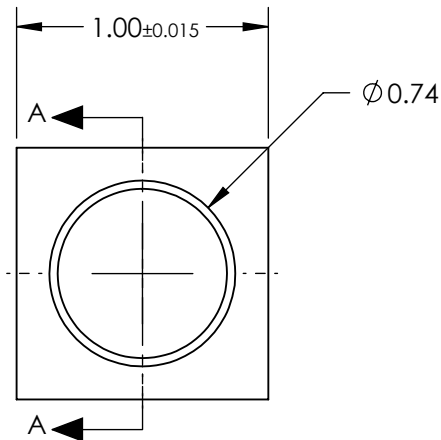
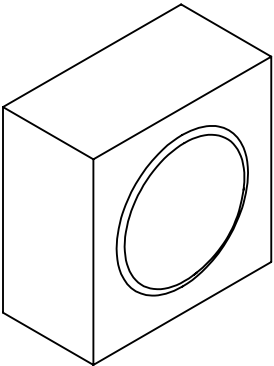


NOTES:

- 1. SUBSTRATE:
D-ZLAF52LA
- 2. NUMERICAL APERTURE: OBJECT: 0.5
IMAGE: 0.10
WD, IMAGE (mm): 3.03
- 3. COATING
S1 & S2: R(AVG) ≤ 0.5% @ 350 - 700nm
- 4. FOCAL LENGTH TOLERANCE: ±1%
- 5. TRANSMITTED WAVEFRONT ERROR (λ, RMS): < 0.040
- 6. MAGNIFICATION: 5X



SECTION A-A



**FOR INFORMATION ONLY:
DO NOT MANUFACTURE
PARTS TO THIS DRAWING**

SPECIFICATIONS SUBJECT TO CHANGE WITHOUT NOTICE
DIMENSIONS ARE FOR REFERENCE ONLY

	S1	S2
SHAPE	CONVEX	PLANO
SURFACE QUALITY	40-20	40-20
CLEAR APERTURE	Ø0.70	Ø0.70
BEVEL	PROTECTIVE AS NEEDED	PROTECTIVE AS NEEDED

EFL	0.55
BFL	3.03
THIRD ANGLE PROJECTION	
ALL DIMS IN	mm

 **Edmund Optics®**

TITLE 0.50 NA 0.55mm FL 350-700nm AR Coated,
Molded Aspheric Lens

DWG NO 37112 SHEET 1 OF 1