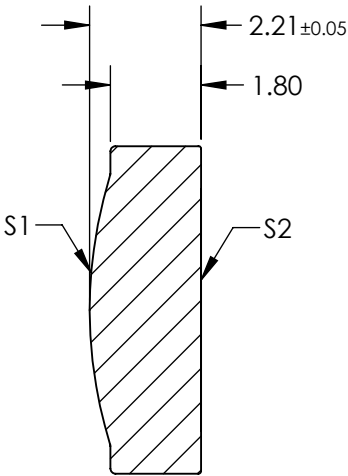
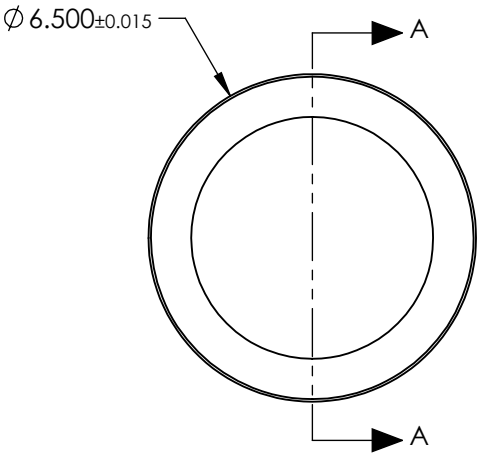


NOTES:


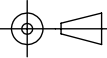
- 1. SUBSTRATE:
D-ZK3
- 2. NUMERICAL APERTURE: 0.16
- 3. COATING
S1 & S2: R (ABS) < 1.0% @ 600 - 1050nm
- 4. FOCAL LENGTH TOLERANCE: $\pm 1\%$
- 5. TRANSMITTED WAVEFRONT ERROR (λ , RMS): < 0.090



SECTION A-A

**FOR INFORMATION ONLY:
DO NOT MANUFACTURE
PARTS TO THIS DRAWING**

SPECIFICATIONS SUBJECT TO CHANGE WITHOUT NOTICE
DIMENSIONS ARE FOR REFERENCE ONLY

	S1	S2	EFL	15.29	 Edmund Optics®		
			BFL	14.00			
SHAPE	CONVEX	PLANO			TITLE	0.16 NA 15.29mm FL 600-1050nm AR Coated, Molded Aspheric Lens	
SURFACE QUALITY	40-20	40-20					
CLEAR APERTURE	Ø5.38	Ø5.38					
BEVEL	PROTECTIVE AS NEEDED	PROTECTIVE AS NEEDED	ALL DIMS IN	mm	DWG NO	37099	SHEET 1 OF 1