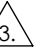
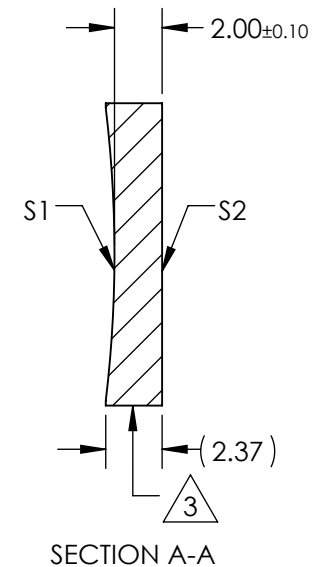
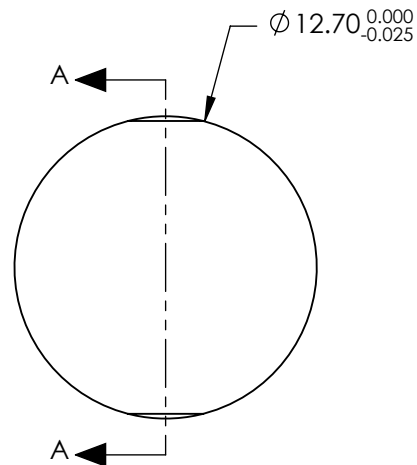

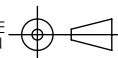


NOTES:

1. SUBSTRATE MATERIAL:
N-BK7
2. COATING (APPLY ACROSS CLEAR APERTURE)
S1 & S2: NONE
3.  FINE GROUND SURFACE
4. POWER, IRREGULARITY, AND SURFACE QUALITY
SPECIFICAIONS APPLY ACROSS CLEAR APERTURE
5. FOCAL LENGTH TOLERANCE: $\pm 1\%$
6. PLANO AXIS WEDGE TOLERANCE: < 5 ARCMIN
POWER AXIS WEDGE TOLERANCE: < 5 ARCMIN
7. RoHS COMPLIANT



**FOR INFORMATION ONLY:
DO NOT MANUFACTURE
PARTS TO THIS DRAWING**

REV. A	S1	S2	SPECIFICATIONS SUBJECT TO CHANGE WITHOUT NOTICE DIMENSIONS ARE FOR REFERENCE ONLY				
SHAPE	CONCAVE	PLANO	<div><div>EFL</div><div>(-100)mm</div></div> <div><div>BFL</div><div>(-101.32)mm</div></div> <div><div> Edmund Optics®</div></div>				
RADIUS	51.68	∞					
SURFACE QUALITY	40 - 20	40 - 20	<div><div>THIRD ANGLE PROJECTION</div><div></div></div> <div><div>TITLE</div><div>Lens PCV Cylinder 12.7mm Dia x -100.00mm EFL</div></div>				
CLEAR APERTURE	Ø11.43	Ø11.43					
COATING APERTURE	N/A	N/A	<div><div>ALL DIMS IN</div><div>mm</div></div> <div><div>DWG NO</div><div>34620</div></div> <div><div>SHEET</div><div>1 OF 1</div></div>				
POWER AT 632.8nm	1.5 WAVES PV	1.5 WAVES PV					
IRREGULARITY AT 632.8nm	0.25 WAVE PV	0.25 WAVE PV					
BEVEL	PROTECTIVE AS NEEDED	PROTECTIVE AS NEEDED					