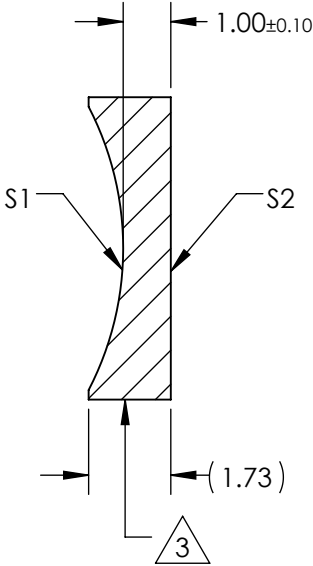
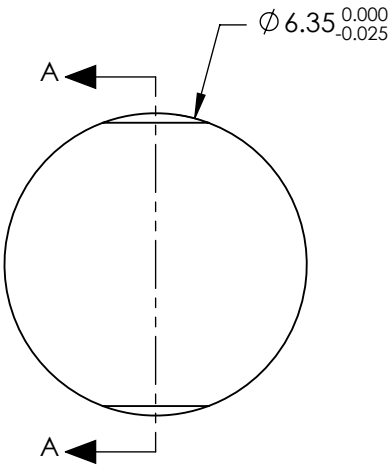


NOTES:

- 1. SUBSTRATE MATERIAL:  
N-BK7
- 2. COATING (APPLY ACROSS CLEAR APERTURE)  
S1 & S2: NONE

3. FINE GROUND SURFACE

- 4. POWER, IRREGULARITY, AND SURFACE QUALITY  
SPECIFICAIONS APPLY ACROSS CLEAR APERTURE
- 5. FOCAL LENGTH TOLERANCE:  $\pm 1\%$
- 6. PLANO AXIS WEDGE TOLERANCE:  $< 5$  ARCMIN  
POWER AXIS WEDGE TOLERANCE:  $< 5$  ARCMIN
- 7. RoHS COMPLIANT


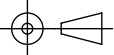


SECTION A-A

**FOR INFORMATION ONLY:  
DO NOT MANUFACTURE  
PARTS TO THIS DRAWING**

REV. A	S1	S2
SHAPE	CONCAVE	PLANO
RADIUS	6.46	$\infty$
SURFACE QUALITY	40 - 20	40 - 20
CLEAR APERTURE	$\varnothing 5.72$	$\varnothing 5.72$
COATING APERTURE	N/A	N/A
POWER AT 632.8nm	1.5 WAVES PV	1.5 WAVES PV
IRREGULARITY AT 632.8nm	0.25 WAVE PV	0.25 WAVE PV
BEVEL	PROTECTIVE AS NEEDED	PROTECTIVE AS NEEDED

SPECIFICATIONS SUBJECT TO CHANGE WITHOUT NOTICE  
DIMENSIONS ARE FOR REFERENCE ONLY

EFL	-12.50mm	 <b>Edmund Optics®</b>		
BFL	-13.16mm			
THIRD ANGLE PROJECTION 		TITLE	LENS PCV CYLINDER 6.35mm DIA. X -12.50 mm EFL	
ALL DIMS IN	mm	DWG NO	34616	SHEET 1 OF 1